

The HWH[®] SpaceMaker[®] Dual-Cylinder “Universal” Straight-Out (SO) Hydraulic Room Extension (with HWH[®] Synchronizing Cylinder)

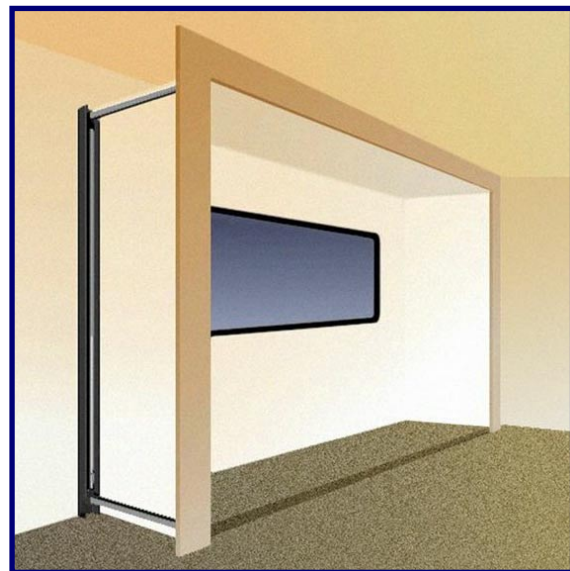
HWH[®] Dual Cylinder “Universal” Room Extension* is designed to simplify installation. New exclusive HWH Inter-Locking Chains* are used to extend and retract the room. Plus provides the coach owner with a clean exterior finish.

Features and Benefits

- Above-floor mounting eliminates the loss of valuable under-floor space.
- A heavy-duty room extension system for rooms up to 3,000 pounds.
- Movable room storage compartments. No more crawling under room to gain access!
- The room floor is suspended which eliminates the possibility of damage to the coach floor coverings.
- The Dual Cylinder “Universal” slide utilizes a four-point attachment, which draws all four corners in for a positive seal whether the room is extended or retracted.
- The HWH Synchronizing Cylinder allows for smooth, even extension and retraction of the room.
- No exposed hardware when the room is extended. The exteriors of the room and the coach have a clean, finished appearance.
- Ideal for use on galley and living rooms.
- The mechanism is easily operated with the use of a momentary switch.



Exterior of room and coach.



Interior view of room.

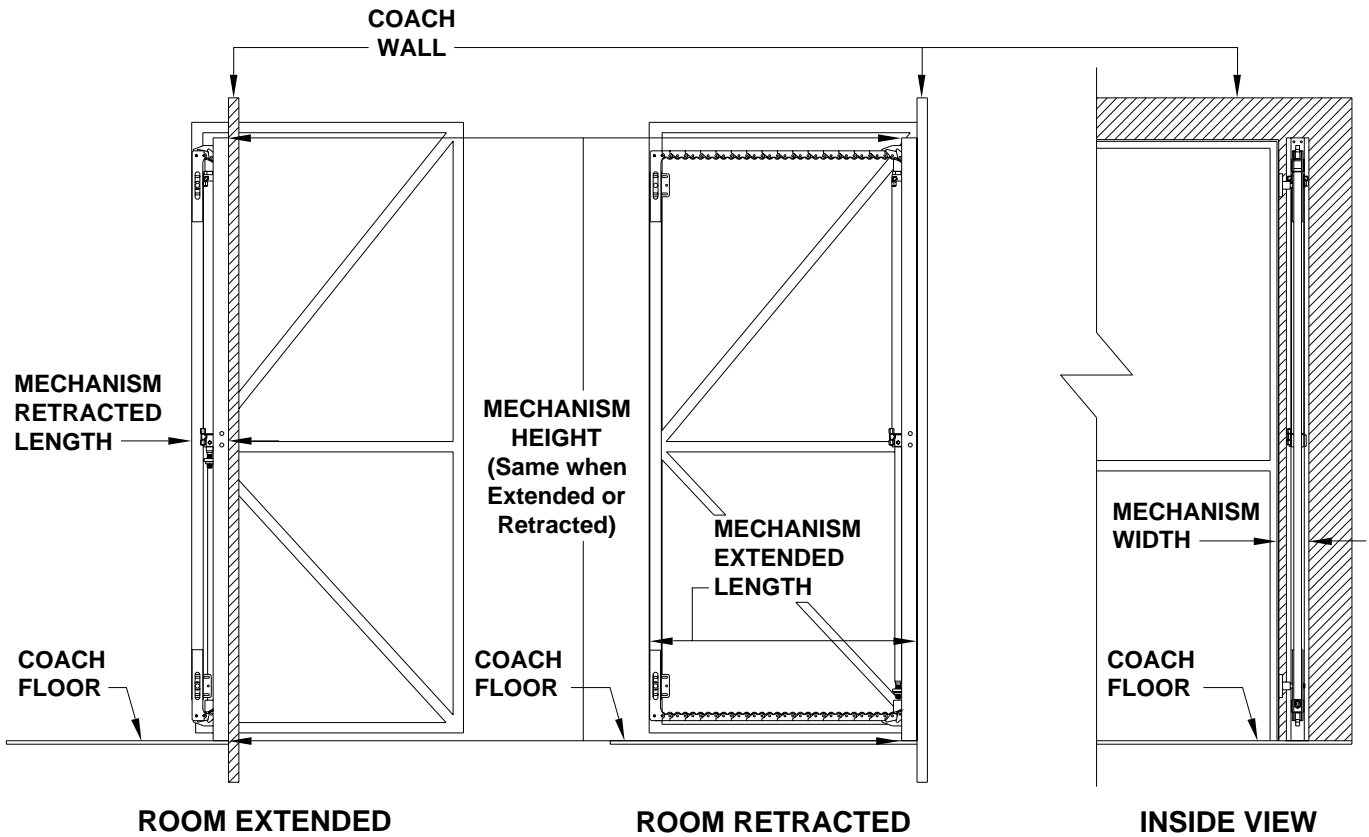


(On I-80, Exit 267 South)
2096 Moscow Road | Moscow, Iowa 52760
Phone: (800)321-3494 or (563)724-3396 | Fax: (563)724-3408
Web: www.HWH.com

STRONG, RELIABLE, HYDRAULIC POWER

Specifications & Features

The HWH® SpaceMaker®: Dual Cylinder "UNIVERSAL" Room Extension Straight-Out (with HWH Synchronizing Cylinder)



Specifications...

WEIGHTS (lbs.)

Each "Universal" Assembly (2)	75.00
Pump *	15.00
Gross Weight W/Synchronizing Cylinder	185.00

DIMENSIONS (in.)

Mechanism Height	78.65
Mechanism Width	4.00
Mechanism Extended Length	34.75
Mechanism Retracted Length	4.75
Max. Extension of Room	30.00

LOAD PER MECHANISM ** (lbs.)	1,500.00
TOTAL LOAD ** (lbs.)	3,000.00

PRIMARY APPLICATIONS

Mechanism - Wall Mounted

*If coach is equipped with an HWH® Leveling System, pump can be shared.

**Load includes all occupants, cargo, and permanent fixtures resting on room.