

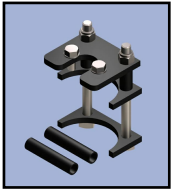
INSTALLATION ACCESSORIES

HWH® STRAIGHT-ACTING, POWER-EXTEND/POWER-RETRACT JACKS

JACK BRACKETS for RV 5th Wheel Trailers

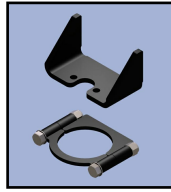
Designed for 7,000 lb. - 1.75 diameter jacks

Bolt-on brackets



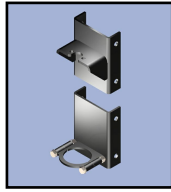
AP43090 - steel for replacing factory mechanical jack

Weld-on brackets



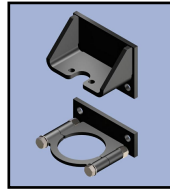
AP43594 - steel universal mounts

Bolt-on brackets



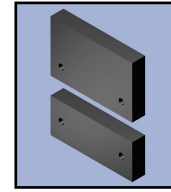
AP45959 - steel 4" channel mount

Bolt-on brackets



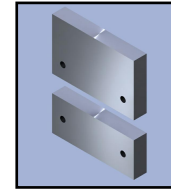
AP43857 - steel for installing new brackets for jack

Weld-on brackets



AP46364 - steel brkts with threaded holes

Weld-on brackets

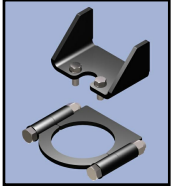


AP46365 - aluminum brkts with threaded holes

JACK BRACKETS for Horse and Specialty Trailers

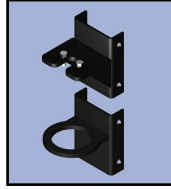
Designed for 12,000 lb. - 2.375 diameter jacks

Weld-on brackets



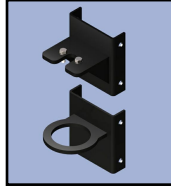
AP44261 - steel universal mount

Bolt-on brackets



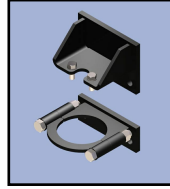
AP44263 - steel 4" channel mount

Bolt-on brackets



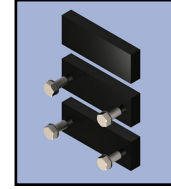
AP44264 - steel 5" channel mount

Bolt-on brackets



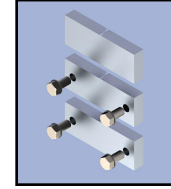
AP44262 - steel universal mount

Weld-on brackets



AP43312 - steel brkts with threaded holes

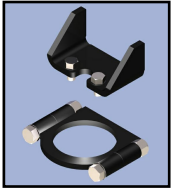
Weld-on brackets



AP43313 - aluminum brkts with threaded holes

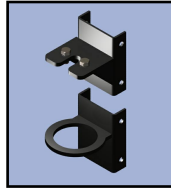
Designed for 16,000 lb. - 2.75 diameter jacks and 12,000 lb., 30" stroke, 2.75 diameter jacks

Weld-on brackets



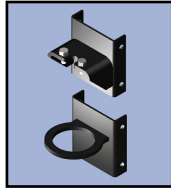
AP44265 - steel universal mount

Bolt-on brackets



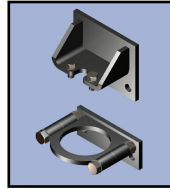
AP44267 - steel 4" channel mount

Bolt-on brackets



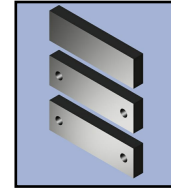
AP44268 - steel 5" channel mount

Bolt-on brackets



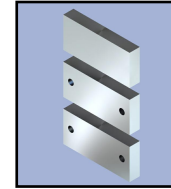
AP44266 - steel universal mount

Weld-on brackets



AP46290 - steel brkts with threaded holes

Weld-on brackets



AP46292 - aluminum brkts with threaded holes

Designed for 24,000 lb. - 3.25 diameter jacks

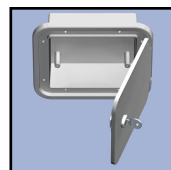
Weld-on brackets



AP44269 - steel universal mount

EACH KIT INCLUDES BRACKETS FOR ONE JACK

RECESS-MOUNTED BOX FOR HWH CONTROL PANELS



AP43523 - Plastic, weather-resistant, box with key latch to contain HWH control panels

