

The HWH® SpaceMaker®

Dual-Cylinder “Universal” Room Extension

Straight-Out Durable Light Weight

(with HWH® Synchronizing Cylinder)

HWH® Dual Cylinder “Universal” Room Extension* is designed to simplify installation. New exclusive HWH Inter-Locking Chains* are used to extend and retract the room and provides the coach with a clean exterior finish.

Features and Benefits

- Above-floor mounting eliminates the loss of valuable under-floor space.
- A durable light-weight room extension system for rooms up to 1,000 pounds.
- The room floor is suspended which eliminates the possibility of damage to the coach floor coverings.
- The Dual Cylinder “Universal” slide utilizes a four-point attachment, which draws all four corners in for a positive seal whether the room is extended or retracted.
- The HWH Synchronizing Cylinder allows for smooth, even extension and retraction of the room.
- No exposed hardware when the room is extended. The exteriors of the room and the coach have a clean, finished appearance.
- Ideal for use on closets, vanities and galleys.
- The mechanism is easily operated with the use of a momentary switch.



Exterior of room and coach.



Interior view of room.



The Look of the Future

(On I-80, Exit 267 South)

2096 Moscow Road | Moscow, Iowa 52760

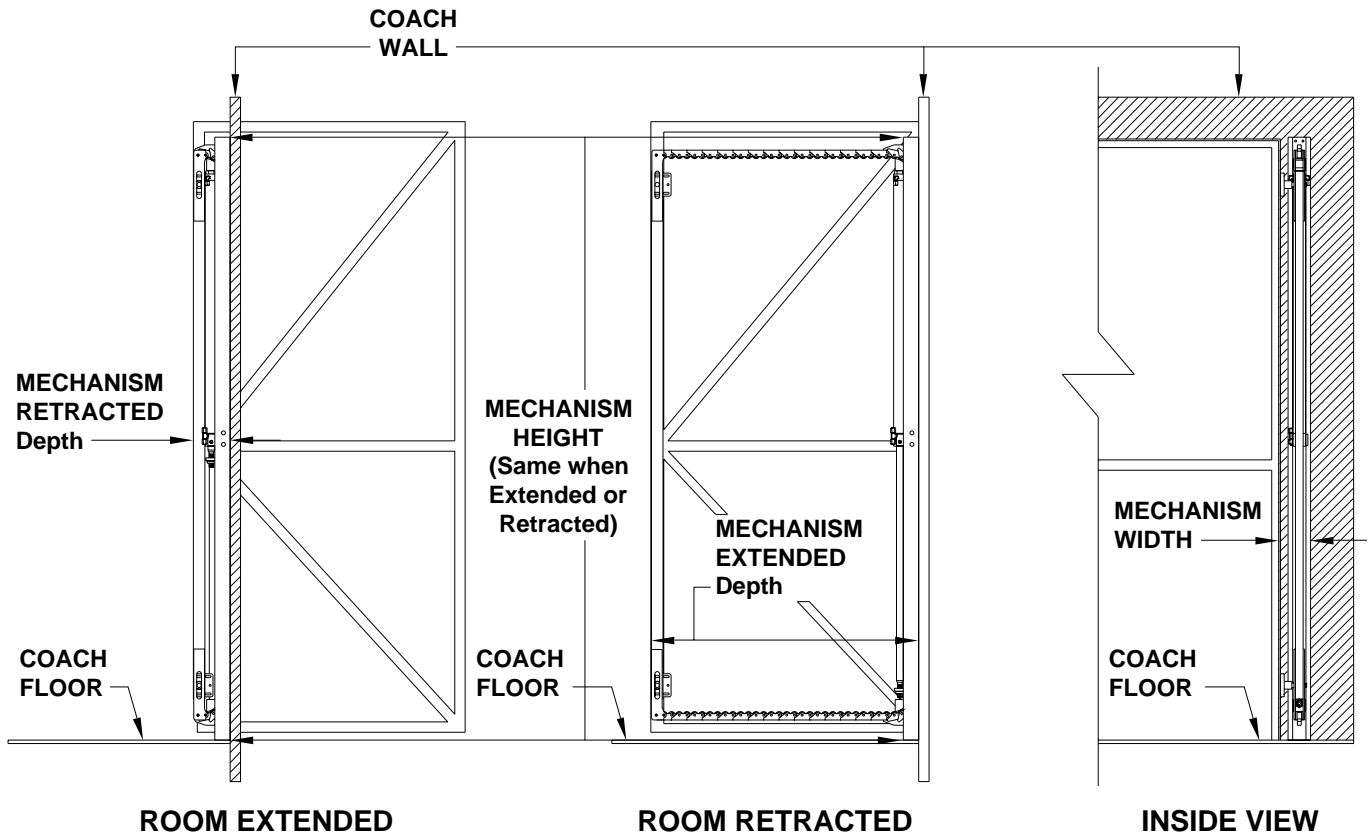
Phone: (800)321-3494 or (563)724-3396 | Fax: (563)724-3408

Web: www.HWH.com

STRONG, RELIABLE, HYDRAULIC POWER

Specifications & Features

The HWH® SpaceMaker®: Dual Cylinder "UNIVERSAL" Room Extension Straight-Out Durable Light Weight (with HWH Synchronizing Cylinder)



Specifications...

WEIGHTS (lbs.)

Each "Universal" Assembly (2)	40.00
Pump *	15.00
Gross Weight W/Synchronizing Cylinder	110.00

DIMENSIONS (in.)

Mechanism Height	70.00
Mechanism Width	3.75
Mechanism Extended Depth	25.75
Mechanism Retracted Depth	3.75
Max. Extension of Room	22.00

LOAD PER MECHANISM ** (lbs.)	500.00
TOTAL LOAD ** (lbs.)	1,000.00

PRIMARY APPLICATIONS

Mechanism - Wall Mounted

*If coach is equipped with an HWH® Leveling System, pump can be shared.

**Load includes all occupants, cargo, and permanent fixtures resting on room.