



HYDRAULIC LINE CONNECTION DIAGRAMS

HWH® SPACEMAKER® SLIDE-OUT SYSTEMS

FEATURING:

*Dual-Cylinder "Universal Platform Level-Out (UPL0)" Slide-Out System
With Three Lift Cylinders*

HWH CORPORATION

(On I-80, Exit 267 South)

2096 Moscow Road | Moscow, Iowa 52760

Ph: 800/321-3494 (or) 563/724-3396 | Fax: 563/724-3408

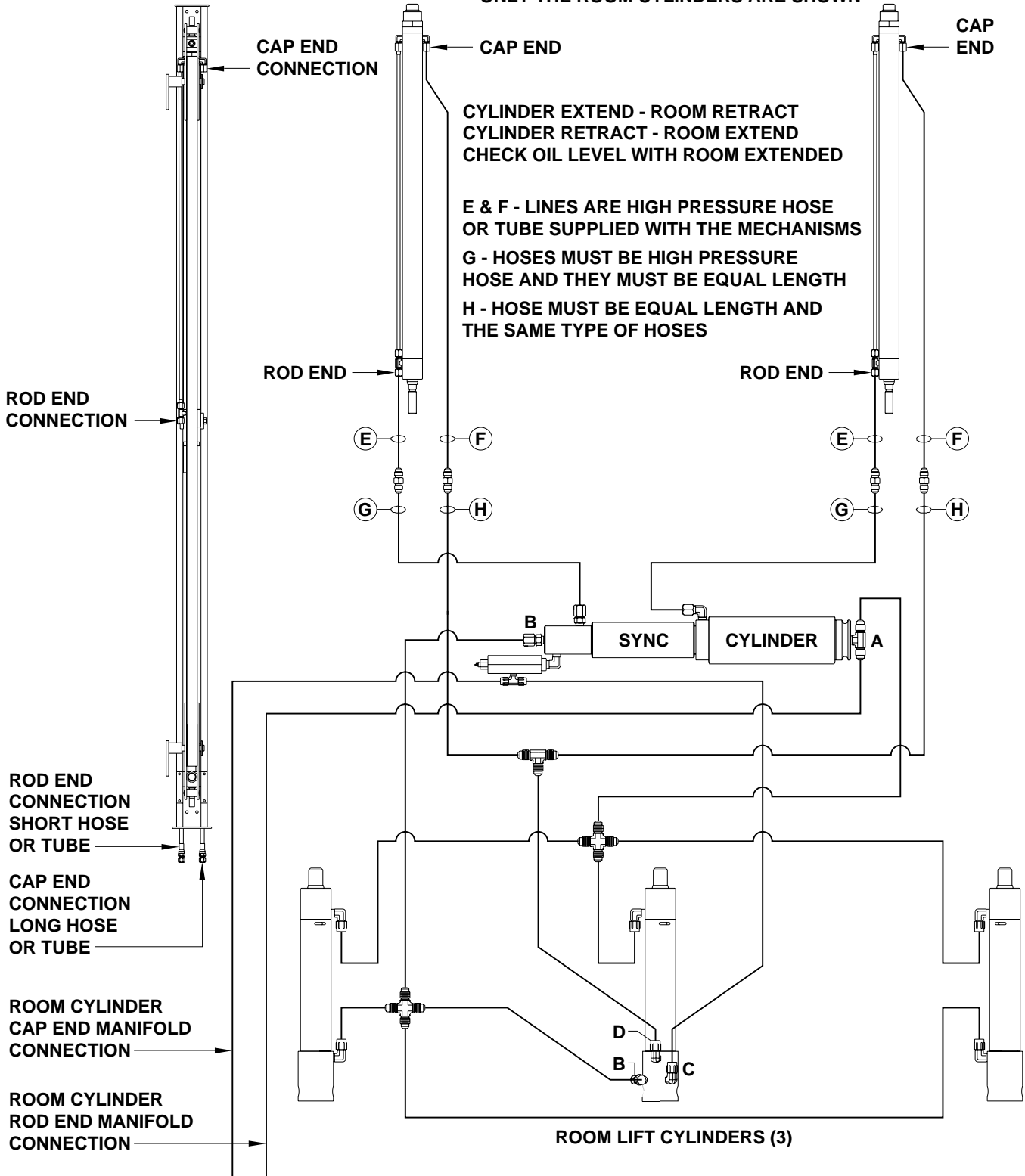
www.hwh.com

**ML50530/MP04.9800K
20JUN12**

GENERIC HYDRAULIC LINE CONNECTION DIAGRAM UNIVERSAL PLATFORM LEVEL-OUT ROOM EXTENSION THREE PLATFORM LIFT CYLINDERS

FRONT VIEW
OF MECHANISM

FOR CONNECTION CLARITY,
ONLY THE ROOM CYLINDERS ARE SHOWN



ROD END
CONNECTION

CAP END
CONNECTION

CAP END

CAP
END

ROD END

ROD END

E

F

E

F

G

H

G

H

ROD END
CONNECTION
SHORT HOSE
OR TUBE

CAP END
CONNECTION
LONG HOSE
OR TUBE

ROOM CYLINDER
CAP END MANIFOLD
CONNECTION

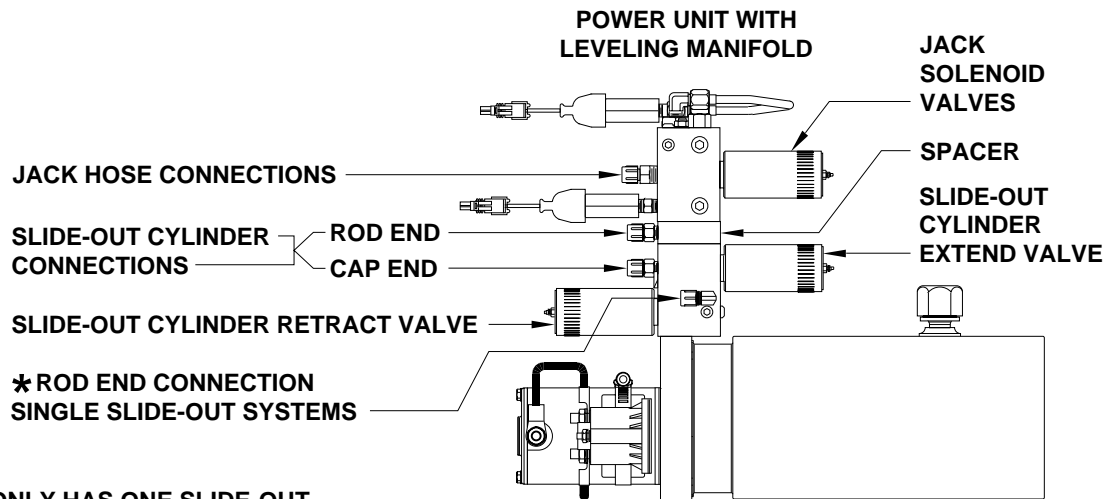
ROOM CYLINDER
ROD END MANIFOLD
CONNECTION

SEE MP64.9900 FOR
PUMP MANIFOLD CONNECTION VARIATIONS

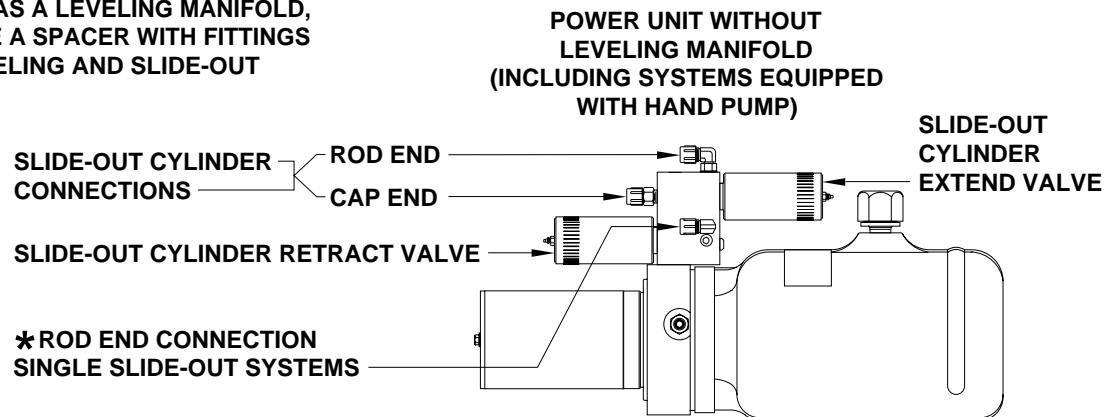
HYDRAULIC LINE CONNECTION DIAGRAM

SLIDE-OUT LINE CONNECTIONS AT THE MANIFOLD

ALL HWH SLIDE-OUT MECHANISMS



* IF THE VEHICLE ONLY HAS ONE SLIDE-OUT AND THE MANIFOLD IS NOT EQUIPPED WITH AN AUXILIARY HAND PUMP, THE ROD END HOSE CONNECTION MAY BE AT A FITTING THAT IS ON EITHER END OF THE SLIDE-OUT MANIFOLD. IF THE POWER UNIT HAS A LEVELING MANIFOLD, THERE WILL NOT BE A SPACER WITH FITTINGS BETWEEN THE LEVELING AND SLIDE-OUT MANIFOLDS.

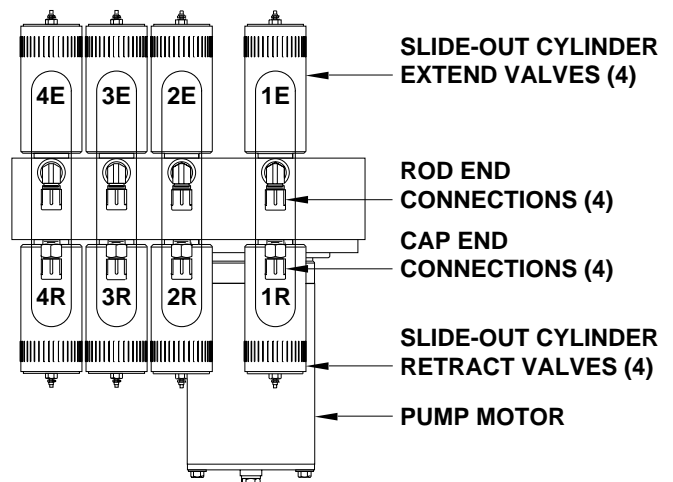


HOSE CONNECTIONS AT THE MANIFOLD ARE CRITICAL. IMPROPER HOSE ROUTING WILL CAUSE INCORRECT SLIDE-OUT FUNCTION AND CAN CAUSE SEVERE DAMAGE TO SLIDE-OUT CYLINDERS OR SOLENOID VALVES. IF A ROD AND CAP END HOSE ARE REVERSED FOR A SLIDE-OUT, THE SLIDE-OUT CYLINDER(S) WILL EXTEND BUT NOT RETRACT.

THE ROD AND CAP HOSES MUST GO TO THE CORRECT FITTINGS IN LINE WITH THE CORRECT EXTEND AND RETRACT VALVES FOR THE SLIDE-OUT. IF THE ROD END OR CAP END HOSES FOR TWO SLIDE-OUTS ARE SWAPPED, EXTREME PRESSURE WILL DAMAGE THE SOLENOID VALVES OR SLIDE-OUT CYLINDERS.

CONNECTION INFORMATION ON THIS PAGE IS THE SAME FOR SYSTEMS EQUIPPED WITH AUXILIARY HAND PUMPS OR REMOTE SLIDE-OUT MANIFOLDS.

TOP VIEW OF 4 SLIDE-OUT MANIFOLD



HYDRAULIC LINE CONNECTION DIAGRAM

GENERIC DIAGRAM FOR UNIVERSAL PLATFORM LEVEL-OUT SLIDE-OUT WITH 3 CYLINDER PLATFORM LIFT

- (A) ROD END - ALWAYS PRESSURIZED
- (B) CAP END
- (C) ROD END - ALWAYS PRESSURIZED
MUST BE HOSES OF EQUAL LENGTH
AND DIAMETER

- (D) CAP END
MUST BE HOSES OF EQUAL LENGTH
AND DIAMETER

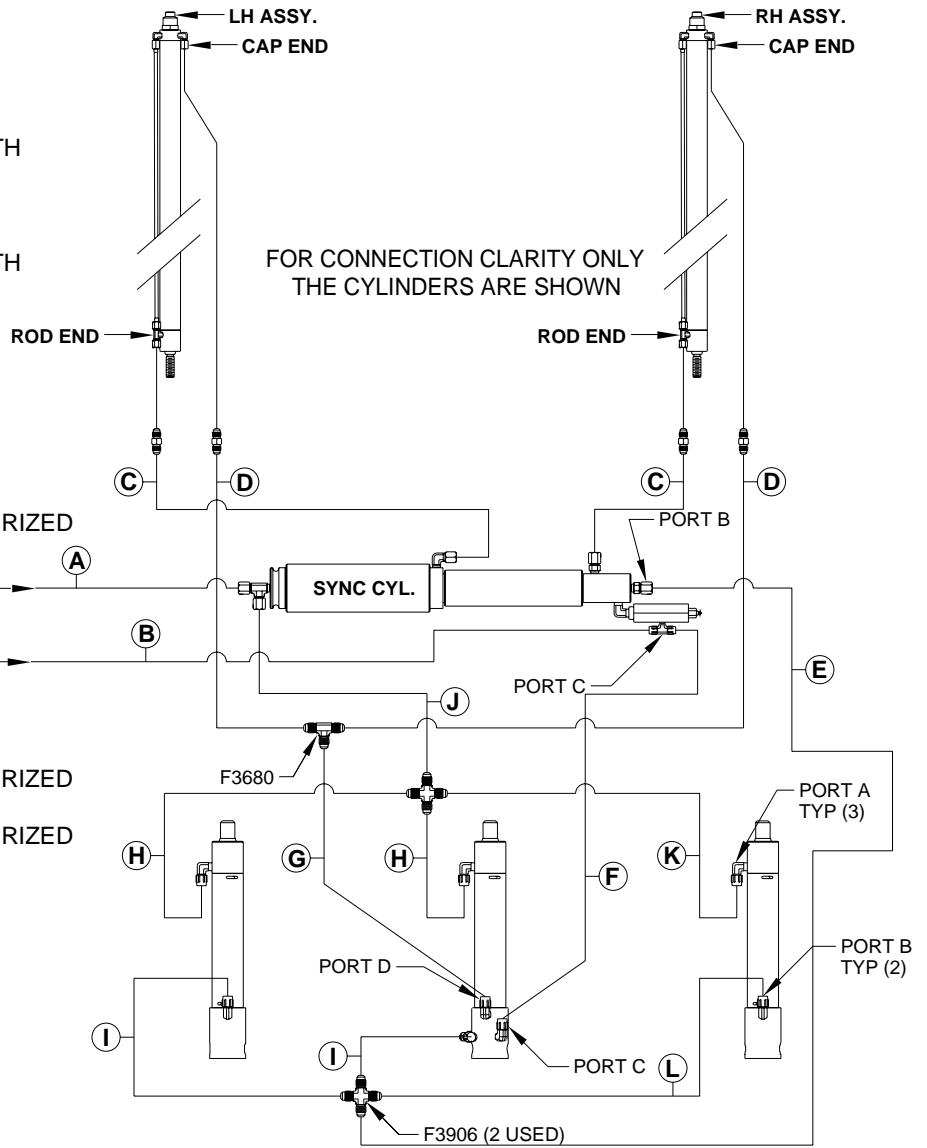
- (E) CAP END (LIFT)
- (F) CAP END (ROOM)
- (G) CAP END (ROOM)

- (H) ROD END (LIFT) - ALWAYS PRESSURIZED

- (I) CAP END (LIFT)
- (J) ROD END (LIFT) - ALWAYS PRESSURIZED
- (K) ROD END (LIFT) - ALWAYS PRESSURIZED
- (L) CAP END (LIFT)

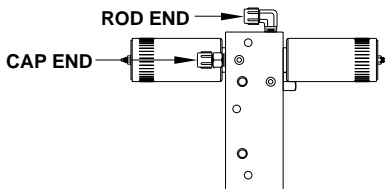
TO ROD END OF MANIFOLD →

TO CAP END OF MANIFOLD →

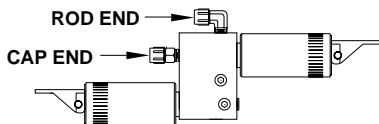


NOTE: GENERIC VIEWS FOR CLARITY. CYLINDERS MAY BE REVERSED

TOP VIEW
SINGLE SLIDE-OUT MANIFOLD



SIDE VIEW
REMOTE MANIFOLD OR SLIDE-OUT MANIFOLD
WITH NO LEVELING MANIFOLD OR
WITH AUXILIARY HAND PUMP



SIDE VIEW
MULTIPLE SLIDE-OUT MANIFOLD
WITH LEVELING MANIFOLD

