



HWH[®] AP45586

Class A Leveling System

Ford F53/16" Tires/1988 and older
Workhorse/Chevy to 2001 - (Brackets Ordered Separately)



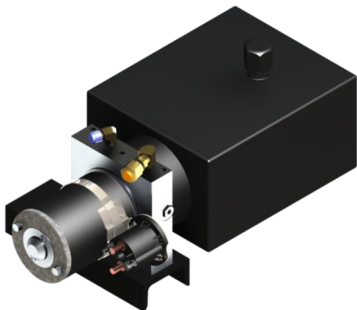
AP0228 Jack Kit

Two Kick-Down (Power-Extend/Spring-Retract) Jacks with a lifting capacity of 6,000 lbs. per jack
Standard Profile



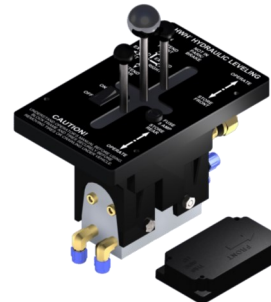
AP0229 Jack Kit

Two Kick-Down (Power-Extend/Spring-Retract) Jacks with a lifting capacity of 9,000 lbs. per jack
Low Profile



AP10471 Power Unit Kit

225 Series, Pump-Motor-Tank/12V DC
Mounting Channel & Hardware
Joystick controlled system



AP30030 Control Kit

225 Series, Joystick-Controlled Hydraulic Leveling System with BI-AXIS[®] Control and Integrated Indicator Light Panel & Leveleze[®] Light Package



AP0240 Hose Kit

Note: Brackets are chassis specific and are ordered separately.



2096 Moscow Road, Moscow, IA 52760 | Ph: 800-321-3494 | Fax: 563-724-3408 | www.HWH.com

STRONG, RELIABLE, HYDRAULIC POWER