



# HWH<sup>®</sup> AP49820 Class C Leveling System

2007 & newer Winnebago Aspect & Itasca Cambria Ford E450  
Cutaway Chassis (Class C)

## Computer Automatic Control with Straight-Acting Jacks



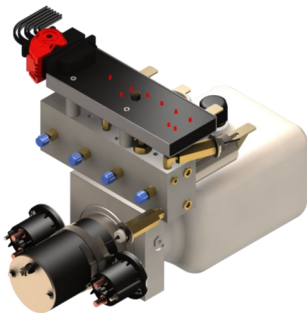
### AP36364 Front Jack Kit

Two Straight-Acting  
(Power-Extend/Spring-Retract) Jacks with a  
lifting capacity of 4,000 lbs. per jack Standard Profile



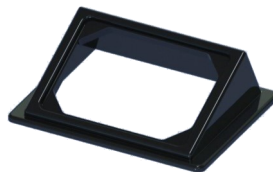
### AP36365 Rear Jack Kit

Two Straight-Acting  
(Power-Extend/Spring-Retract) Jacks with a  
lifting capacity of 6,000 lbs. per jack on the rear



### AP47564 Power Unit Kit

725 Series, 12 Volt DC Motor and  
Pump 125 amp - 3,000 psi relief  
with prewired control module  
and jack valving



### P35390 Bezel Plate

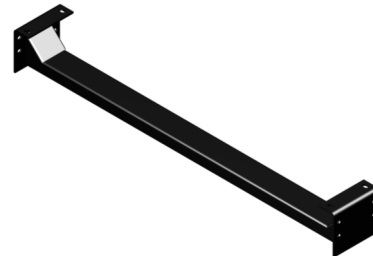


### AP47561 Control Kit

725 Series, Single-Step BI-AXIS<sup>®</sup>  
Touch Panel-Controlled Hydraulic  
Leveling System with  
Leveze<sup>®</sup> Light Package



### AP0252 Hose Kit



### AP36366 Cross Tie Kit (Rear)



[www.HWH.com](http://www.HWH.com)



2096 Moscow Road, Moscow, IA 52760 | Ph: 800-321-3494 | Fax: 563-724-3408



Installation Info

# STRONG, RELIABLE, HYDRAULIC POWER

ML51120\_AP49820.PUB 12OCT15