



HWH[®] AP50592 5th Wheel Leveling System with Landing Gear

Some fabrication may be required for mounting.



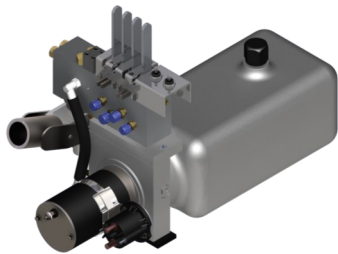
AP50763 Jack

Two Straight-Acting,
(Power-Extend/Power-Retract) Jacks with a
lifting capacity of 7,000 lbs. per jack and a 21" stroke



AP46747 Jack

Two Straight-Acting,
(Power-Extend/Spring-Retract) Jacks with a
lifting capacity of 9,000 lbs. per jack and a 13" stroke



AP42768 Power Unit

Hand/Electric Pump with
Hydraulic Switches



AP43090

Clamp Mounting Kit



AP43594

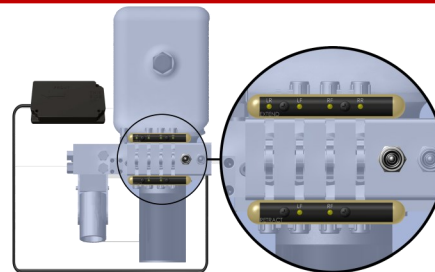
Weld Mounting Kit



AP43072 & AP43085

Hose Kit

*The Leveleze[®] Indicator makes leveling
easy. Avoid the confusion of looking at
a level bubble to figure which side or
end of the trailer needs to be leveled.*



**Optional AP43076
Leveleze[®] Indicator Light System**



www.HWH.com



2096 Moscow Road, Moscow, IA 52760 Ph: 800-321-3494 | Fax: 563-724-3408



Installation Info

STRONG, RELIABLE, HYDRAULIC POWER

ML51120_AP50592.PUB 22SEP14