



# HWH<sup>®</sup> AP51530 Class A Leveling System

Ford F53/2004 and newer

19.5" & 22.5" Tires, 15,700 lbs., 18,000 lbs. or 20,500 lbs. GVWR  
10<sup>th</sup> Digit In VIN must be a four or larger



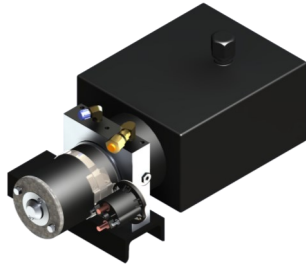
**AP49760 Jack Kit**

Two Straight-Acting (Power-Extend/Spring-Retract) Jacks  
with a lifting capacity of 6,000 lbs. per jack



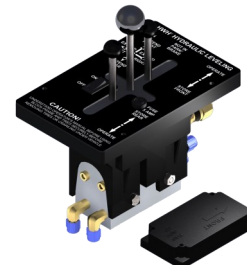
**AP49761 Jack Kit**

Two Straight-Acting (Power-Extend/Spring-Retract) Jacks  
with a lifting capacity of 9,000 lbs. per jack



**AP10471 Power Unit Kit**

225 Series, Pump-Motor-Tank/12V DC  
Mounting Channel & Hardware  
Joystick controlled system

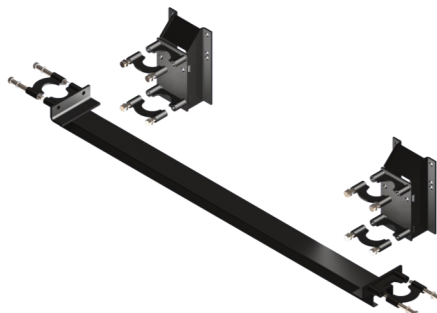


**AP28825 Control Kit**

225 Series, Joystick-Controlled Hydraulic Leveling System  
with BI-AXIS<sup>®</sup> Control and Integrated Indicator  
Light Panel & Levelze<sup>®</sup> Light Package

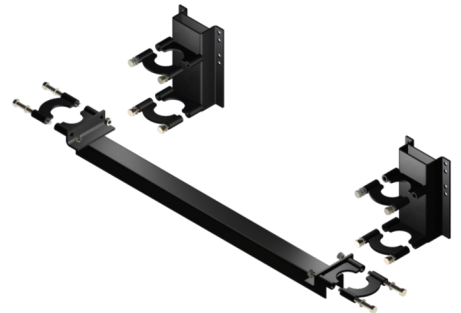


**AP0240 Hose Kit**



**AP49762 Mounting Tie Kit**

6,000 lb. 4F53F



**AP49764 Mounting Tie Kit**

9,000 lb. FD/WH



2096 Moscow Road, Moscow, IA 52760 | Ph: 800-321-3494 | Fax: 563-724-3408 | [www.HWH.com](http://www.HWH.com)

## STRONG, RELIABLE, HYDRAULIC POWER

ML51120\_AP51530.PUB 30JAN14