



HWH[®] AP52393 Sprinter Leveling System

2008 Sprinter 3500 Series Chassis with the V6 Diesel Engine and Coach build date after 11/2006 | Winnebago View Profile & Itasca Navion IQ View & Navion, Fleetwood Pulse, Icon and others

Note: View or Navion 24M may need modifications on the rear battery box bracket or dump valves. Winnebago with LP Generator may need P54186.



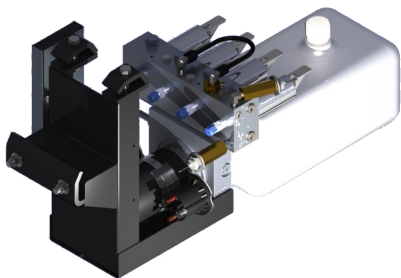
AP51904 Jack Kit

Two Straight-Acting (Power-Extend/Spring-Retract) Jacks with a lifting capacity of 4,000 lbs. per jack on the front



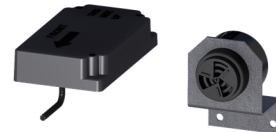
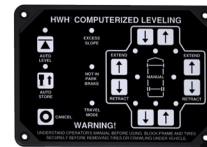
AP52759 Rear Jack Mounted Inboard OR AP52759 Rear Jack Mounted Outboard

Two Straight-Acting (Power-Extend/Spring-Retract) Jacks with a lifting capacity of 6,000 lbs. per jack on the rear



AP58818 Power Unit Kit

725 Series, 12 Volt DC Motor and Pump
125 amp - 3,000 psi relief with prewired control module and jack valving

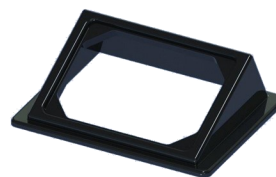


AP52515 Control Kit

725 Series, Single-Step BI-AXIS[®] Touch Panel-Controlled Hydraulic Leveling System with Leveleze[®] Light Package



AP0252 Hose Kit



P35390 Bezel Plate



www.HWH.com



2096 Moscow Road, Moscow, IA 52760 Ph: 800-321-3494 | Fax: 563-724-3408



Installation Info

STRONG, RELIABLE, HYDRAULIC POWER

ML51120_AP52393.PUB 04APR18