



HWH[®] AP53802

Class C Leveling System

Ford E350/E450 Cutaway Chassis (1998 and newer) (Class C)

Will not fit 2007 & newer Winnebago Aspect & Itasca Cambria Ford E450/E350 Cutaway Chassis (Class C)

Computer Automatic Control with Straight-Acting Jacks



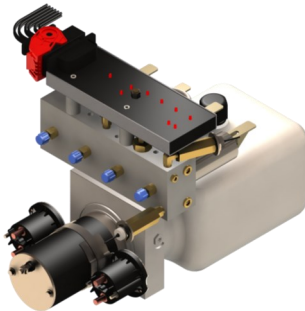
AP53804 Front Jack Kit

Two Straight-Acting (Power-Extend/Spring-Retract) Jacks with a lifting capacity of 4,000 lbs. per jack Standard Profile



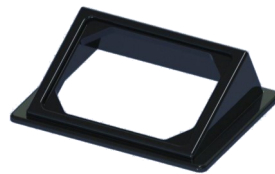
AP53805 Rear Jack Kit (Clamp-On)

Two Straight-Acting (Power-Extend/Spring-Retract) Jacks with a lifting capacity of 6,000 lbs. per jack on the rear

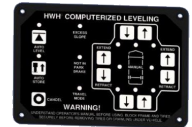


AP47564 Power Unit Kit

725 Series, 12 Volt DC Motor and Pump 125 amp - 3,000 psi relief with prewired control module and jack valving



P35390 Bezel Plate



AP52865 Control Kit

725 Series, Single-Step BI-AXIS[®] Touch Panel-Controlled Hydraulic Leveling System with Leveze[®] Light Package



AP0252 Hose Kit



AP52993 Rear Jack Cross Tie Kit



www.HWH.com



2096 Moscow Road, Moscow, IA 52760 | Ph: 800-321-3494 | Fax: 563-724-3408



Installation Info

STRONG, RELIABLE, HYDRAULIC POWER

ML51120_AP53802.PUB 09OCT15