



HWH[®] AP57512 Sprinter Leveling System

Only Used on Commercial Van Bodies

Fits Most 2500/3500 Sprinter/Mercedes Commercial Van Bodies. Some Modification on Rear Brackets may be required.



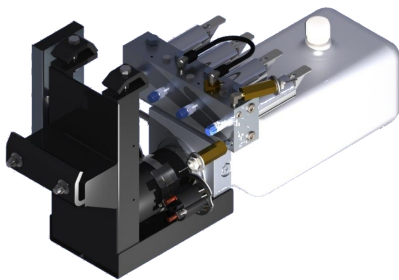
AP51904 Front Jack Kit

Two Straight-Acting
(Power-Extend/Spring-Retract) Jacks with a
lifting capacity of 4,000 lbs. per jack on the front



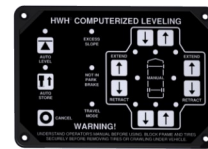
AP37942 Rear Jack Kit with AP49302 Crosstie Kit

Two Straight-Acting
(Power-Extend/Spring-Retract) Jacks with a
lifting capacity of 6,000 lbs. per jack on the rear



AP58818 Power Unit Kit

725 Series, 12 Volt DC Motor and Pump
125 amp - 3,000 psi relief with prewired
control module and jack valving

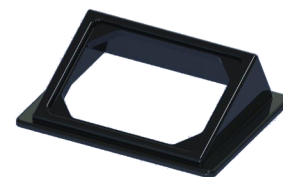


AP52515 Control Kit

725 Series, Single-Step BI-AXIS[®]
Touch Panel-Controlled Hydraulic
Leveling System with Leveleze[®] Light Package



AP0252 Hose Kit



P35390 Bezel Plate



www.HWH.com



2096 Moscow Road, Moscow, IA 52760 Ph: 800-321-3494 | Fax: 563-724-3408



Installation Info

STRONG, RELIABLE, HYDRAULIC POWER

ML51120_AP57512.PUB 11OCT18