



HWH[®] AP59094 Sprinter Leveling System

2020 & Newer, Only Used on VS30 Commercial Van Bodies

Fits Most 2500/3500 Sprinter/Mercedes VS30 Commercial Van Bodies with the V6 Diesel Engine.
Some Modification on Rear Brackets may be required.



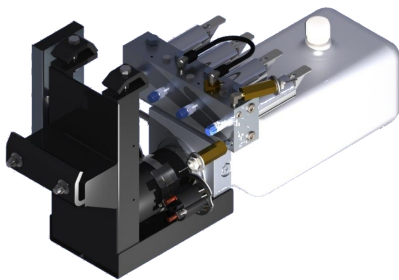
Front Jack Kit

Two Straight-Acting (Power-Extend/Spring-Retract) Jacks with a lifting capacity of 4,000 lbs. per jack on the front



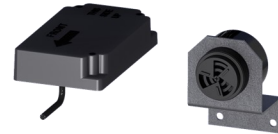
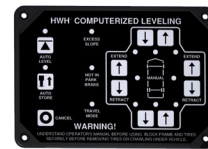
Rear Jack Kit with Crosstie Kit

Two Straight-Acting (Power-Extend/Spring-Retract) Jacks with a lifting capacity of 6,000 lbs. per jack on the rear



Power Unit Kit

725 Series, 12 Volt DC Motor and Pump
125 amp - 3,000 psi relief with prewired control module and jack valving

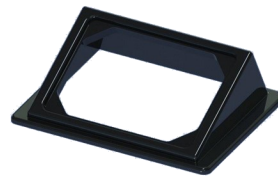


Control Kit

725 Series, Single-Step BI-AXIS[®]
Touch Panel-Controlled Hydraulic Leveling System with Leveleze[®] Light Package



Hose Kit



Bezel Plate



www.HWH.com



2096 Moscow Road, Moscow, IA 52760 Ph: 800-321-3494 | Fax: 563-724-3408



Installation Info

STRONG, RELIABLE, HYDRAULIC POWER

ML51120_AP59094.PUB 09MAR21