

ORIENTATION
← FRONT

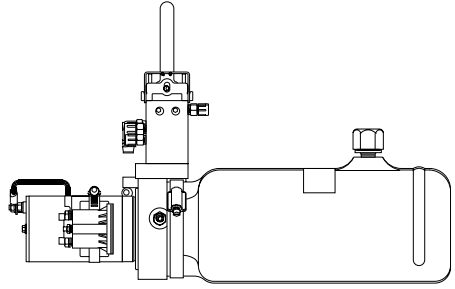
TOP VIEW AP43926 RIGHT FRONT
CAP END
ROD END

TOP VIEW AP43926 LEFT FRONT
CAP END
ROD END

TOP VIEW AP45206 RIGHT REAR
ROD END
CAP END

TOP VIEW AP45206 LEFT REAR
CAP END
ROD END

TOP VIEW-MANIFOLD



SIDE VIEW PUMP/MANIFOLD-AP45205

LOCATION AND ORIENTATION OF PUMP/MANIFOLD ASSEMBLY WILL DIFFER DEPENDING UPON O.E.M.

- Ⓐ .25" ID HOSE - RF ROD END
- Ⓑ .25/05" HOSE - RF CAP END
- Ⓒ .25" ID HOSE - LF ROD END
- Ⓓ .25/05" HOSE - LF CAP END
- Ⓔ .25" ID HOSE - RR ROD END
- Ⓕ .25/05" HOSE - RR CAP END
- Ⓖ .25" ID HOSE - LR ROD END
- Ⓗ .25/05" HOSE - LR CAP END

NOTE: INSTALLATION MUST CONFORM TO GOOD SHOP PRACTICES, SAE STANDARDS, RVIA STANDARDS, AND OTHER APPLICABLE STANDARDS.

LEVELING SYSTEM: AP45210

NO.	DATE	REVISION
THE INFORMATION DISCLOSED ON THIS DRAWING IS CONFIDENTIAL AND MUST NOT BE DISCLOSED OR USED IN ANY MANNER WHICH WILL BE DETRIMENTAL TO THE HWH CORPORATION		

HWH		I-80 EXIT 267 SOUTH RT 1 MOSCOW, IOWA 52760	
SCALE 1:6	DATE 01SEP09	DRAWN BY .	
HYD CONN DIAGRAM			
WESTERN SHELTER			DRAWING NUMBER MP70188