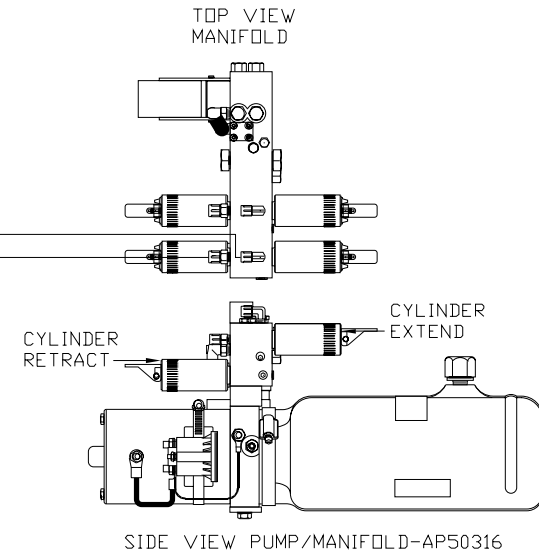


- Ⓐ HOSE ASSY .25"  
ROD END - ALWAYS PRESSURIZED
- Ⓑ HOSE ASSY .25"  
CAP END
- Ⓒ HOSE ASSY HWH02HP OR 03  
ROD END - ALWAYS PRESSURIZED - MUST  
BE EQUAL LENGTH AND DIAMETER
- Ⓓ HOSE ASSY .25"  
CAP END - MUST MAINTAIN EQUAL LENGTH  
AND DIAMETER

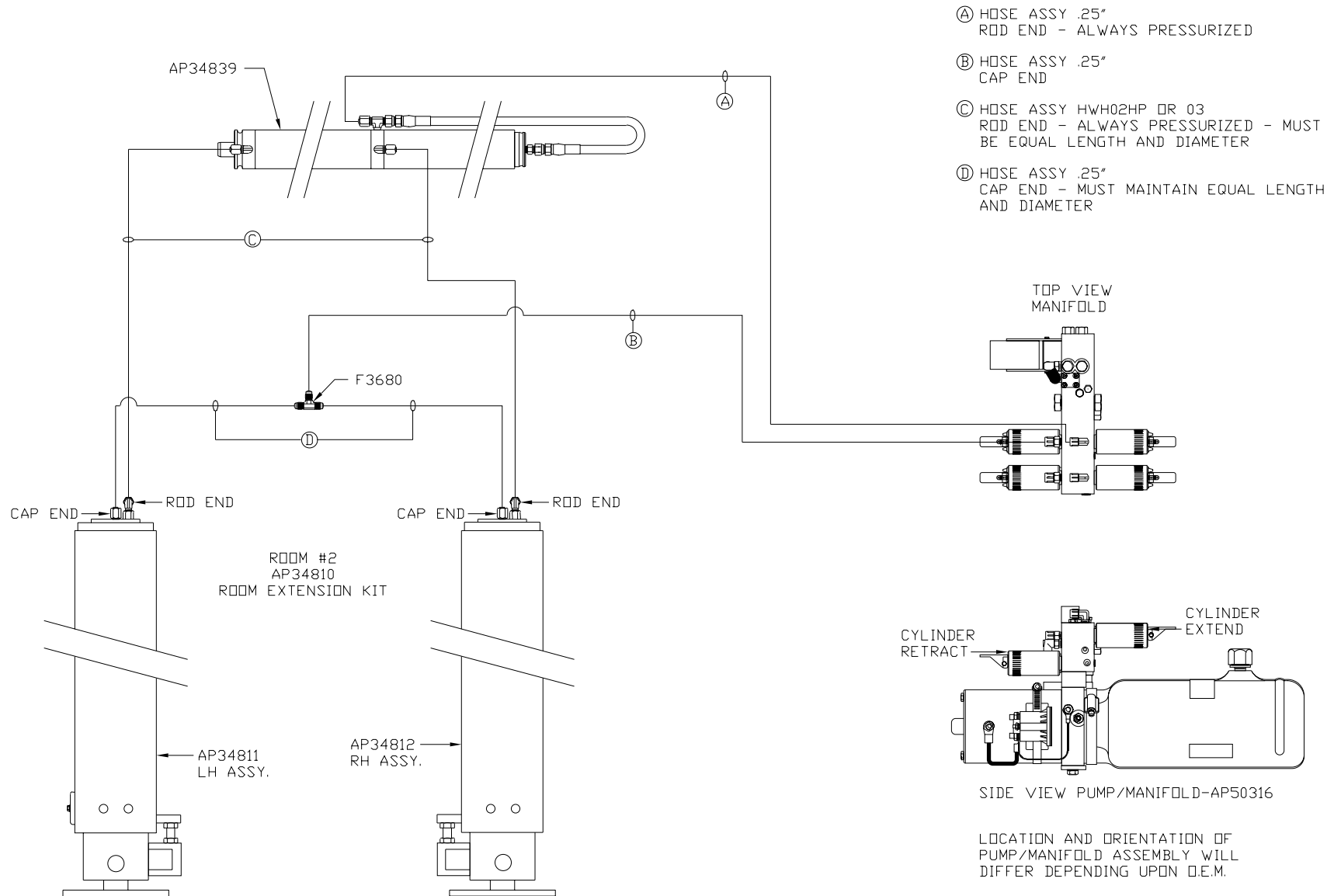


LOCATION AND ORIENTATION OF  
PUMP/MANIFOLD ASSEMBLY WILL  
DIFFER DEPENDING UPON O.E.M.

NOTE: INSTALLATION MUST CONFORM TO GOOD SHOP PRACTICES, SAE  
STANDARDS, RVIA STANDARDS, AND OTHER APPLICABLE STANDARDS.

CONTROL PKG: AP50307

		HWH I-80 EXIT 267 SOUTH RT 1 MOSCOW, IOWA 52760	
		SCALE 1:6	DATE 16MAY12
		DRAWN BY .	
		HYD CONN DIAGRAM	
NO.	DATE	REVISION	
		THE INFORMATION DISCLOSED ON THIS DRAWING IS CONFIDENTIAL AND MUST NOT BE DISCLOSED OR USED IN ANY MANNER WHICH WILL BE DETRIMENTAL TO THE HWH CORPORATION	
		WESTERN SHELTER	DRAWING NUMBER MP70531 A/B



NOTE: INSTALLATION MUST CONFORM TO GOOD SHOP PRACTICES, SAE STANDARDS, RVIA STANDARDS, AND OTHER APPLICABLE STANDARDS.