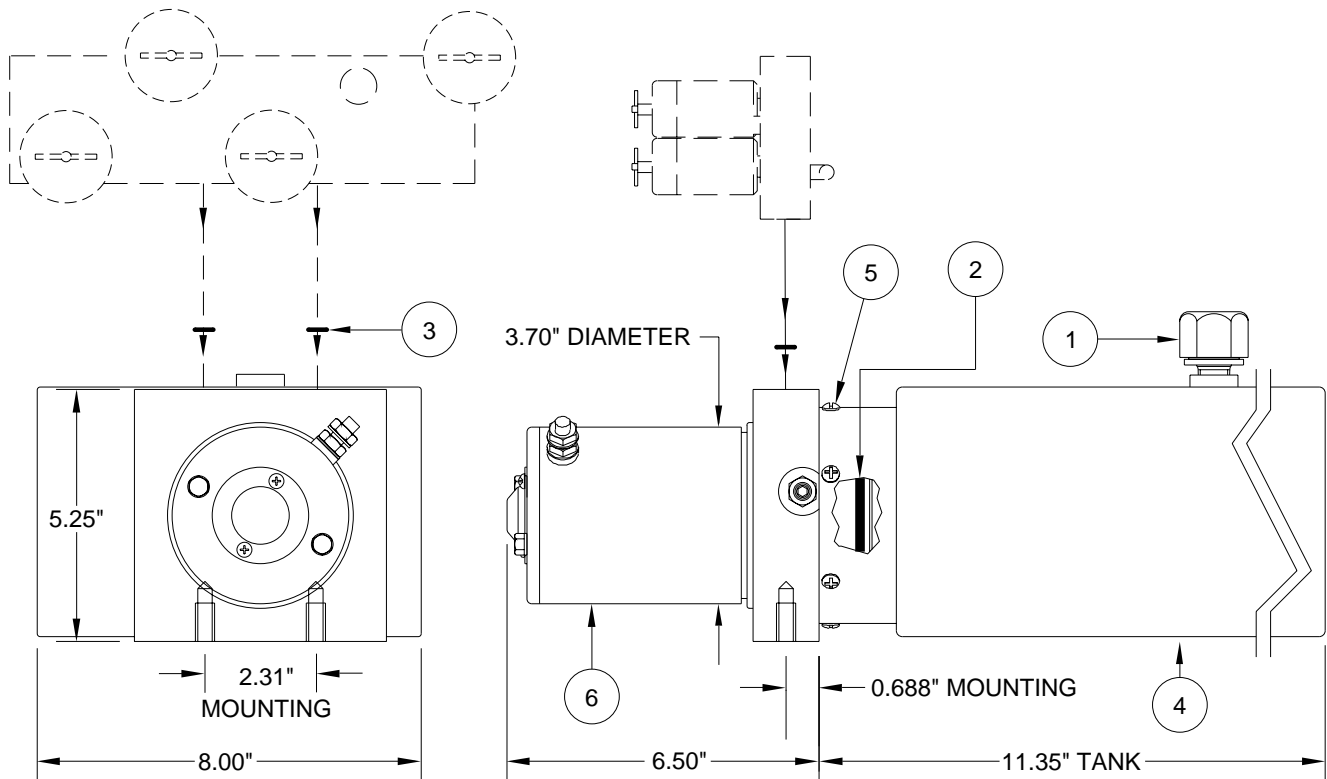


PUMP/MOTOR/TANK ASSEMBLY AP15117 MONARCH - 12 VOLT

PUMP RELIEF IS SET AT 2000 PSI. THIS PUMP IS NOT USED WITH LEVELING SYSTEMS.

REPLACEMENT PUMP INCLUDES
O-RING KIT (3).**



MONARCH - 12 VOLT 1.5 GALLON BOTTOM MOUNT SUPPLIED 1995 TO PRESENT

ITEM	PART	QTY	DESCRIPTION	ITEM	PART	QTY	DESCRIPTION
	RAP90400		POWER UNIT/ BMM/1.5 GALLON 3" MOTOR 2000 PSI	3	** R92957	1	O-RING KIT
1	RAP7876	1	BREATHER CAP/ DIPSTICK	4	RP91692	1	TANK 1.5 GALLON 11.35" X 5.25" X 8.00"
2	RP5008	1	O-RING TANK	5	RAP90678	1	HDWE TANK SCREWS
				6	RAP91249	1	MOTOR KIT 3.70"
					R5303		BRACKET KIT ADAPTS BOTTOM MOUNT PUMP TO SIDE MOUNT.

**R92957 O-RING KIT INCLUDES (8) O2-015-9N O-RINGS FOR 11/16" SPOT FACE ON MANIFOLD