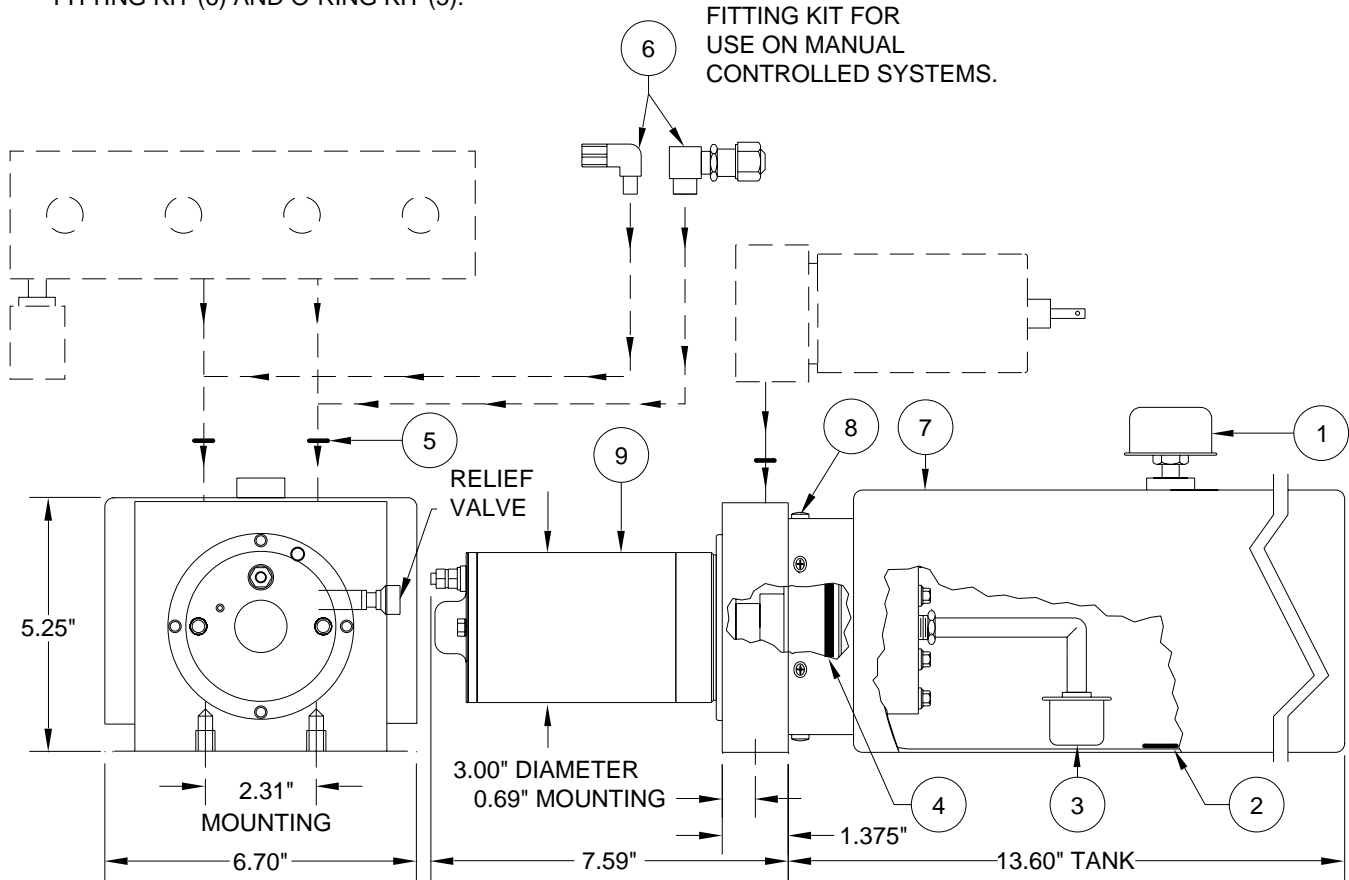


PUMP/MOTOR/TANK ASSEMBLY

AP14012 MONARCH - 24 VOLT - OBSOLETE

PUMP RELIEF IS SET AT 3500 PSI.

REPLACEMENT PUMP INCLUDES FITTING KIT (6) AND O-RING KIT (5).



**MONARCH - 24 VOLT
1.5 GALLON BOTTOM MOUNT
SUPPLIED 1997 TO 2004**

ITEM	PART	QTY	DESCRIPTION	ITEM	PART	QTY	DESCRIPTION
	AP14012	OBS	POWER UNIT/ BMM/1.5 GALLON 3" MOTOR	7	RP90100	1	TANK 1.2 GAL. - PLASTIC 13.50" X 5.46" X 6.50" INCLUDES TANK MOUNTING BAND CLAMP
1	RAP7876	1	BREATHER CAP / DIPSTICK	8	RAP90678	1	HDWE TANK SCREWS
2	RP3526	1	MAGNET	9	RAP90409	1	MOTOR KIT 3.00" 24V
3	RP5010	1	STRAINER		R5303		BRACKET KIT ADAPTS BOTTOM MOUNT PUMP TO SIDE MOUNT.
4	RP5008	1	O-RING TANK				
5	** R92957	1	O-RING KIT				
6	RAP0586	1	FITTING KIT (INCLUDES ITEM 5)				

NOTE : THIS POWER UNIT IS NO LONGER AVAILABLE. SOME PARTS FOR REBUILDING THESE PUMPS MAY BE AVAILABLE. SEE THE REPLACEMENT INFORMATION PAGE FOR REPLACEMENT PUMP.

**R92957 O-RING KIT INCLUDES (8) O2-015-9N O-RINGS FOR 11/16" SPOT FACE ON MANIFOLD