

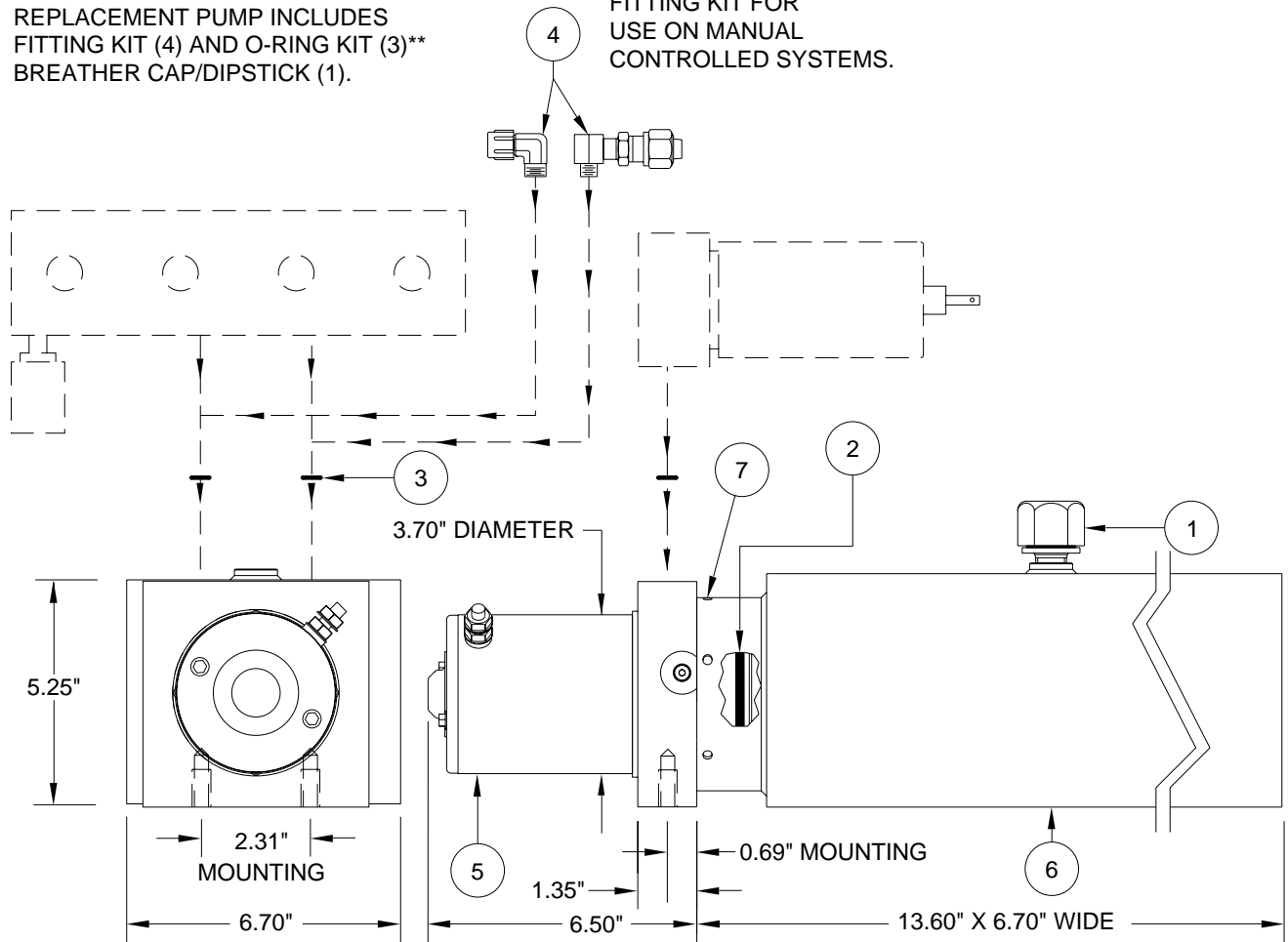
# PUMP/MOTOR/TANK ASSEMBLY

## AP29577 MONARCH - OBSOLETE

PUMP RELIEF IS SET AT 3500 PSI.

REPLACEMENT PUMP INCLUDES FITTING KIT (4) AND O-RING KIT (3)\*\* BREATHER CAP/DIPSTICK (1).

FITTING KIT FOR USE ON MANUAL CONTROLLED SYSTEMS.



**MONARCH - 12 VOLT  
1.5 GALLON BOTTOM MOUNT  
SUPPLIED 2002 TO 2006**

ITEM	PART	QTY	DESCRIPTION	ITEM	PART	QTY	DESCRIPTION
	AP29577	<b>OBS</b>	POWER UNIT/ BMM/1.5 GALLON 3.7" MOTOR	5	RAP91249	1	MOTOR 3.70"
1	RAP7876	1	BREATHER CAP/ DIPSTICK	6	RP90100	1	TANK 1.2 GAL. - PLASTIC 13.50" X 5.46" X 6.50" INCLUDES TANK MOUNTING BAND CLAMP
2	RP5008	1	O-RING TANK	7	RAP90678	1	HDWE TANK SCREWS
3	**R92957	1	O-RING KIT				
4	RAP0586	1	FITTING KIT				

**NOTE :** THIS POWER UNIT IS NO LONGER AVAILABLE. SOME PARTS FOR REBUILDING THESE PUMPS MAY BE AVAILABLE. SEE THE REPLACEMENT INFORMATION PAGE FOR REPLACEMENT PUMP.

\*\*R92957 O-RING KIT INCLUDES (8) O2-015-9N O-RINGS FOR 11/16" SPOT FACE ON MANIFOLD