

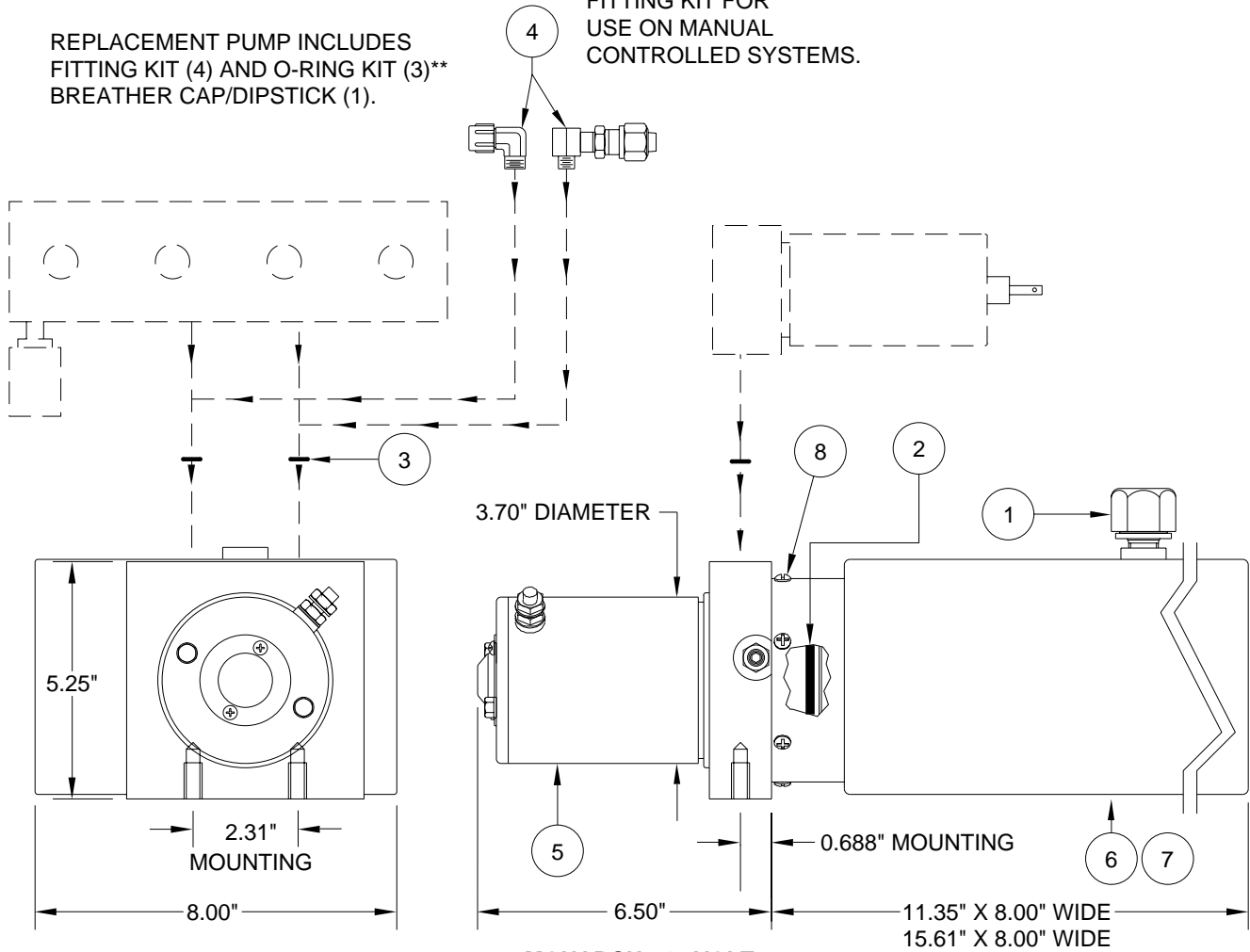
# PUMP/MOTOR/TANK ASSEMBLY

## AP29281/AP29578 MONARCH

PUMP RELIEF IS SET AT 3500 PSI.

REPLACEMENT PUMP INCLUDES FITTING KIT (4) AND O-RING KIT (3)\*\* BREATHER CAP/DIPSTICK (1).

FITTING KIT FOR USE ON MANUAL CONTROLLED SYSTEMS.



**MONARCH - 12 VOLT  
3.70" MOTOR  
SUPPLIED 2002 TO PRESENT**

| ITEM | PART     | QTY | DESCRIPTION                                    | ITEM | PART     | QTY | DESCRIPTION                               |
|------|----------|-----|--|------|----------|-----|---|
|      | RAP91281 |     | POWER UNIT/BMM/1.5 GALLON 3.7" MOTOR (AP29281) | 3    | **R92957 | 1   | O-RING KIT                                |
|      | RAP91686 |     | POWER UNIT/BMM/2.0 GALLON 3.7" MOTOR (AP29578) | 4    | RAP0586  | 1   | FITTING KIT                               |
| 1    | RAP7876  | 1   | BREATHER CAP/DIPSTICK                          | 5    | RAP91249 | 1   | MOTOR KIT 3.70"                           |
| 2    | RP5008   | 1   | O-RING TANK                                    | 6    | RP91692  | 1   | TANK 1.5 GALLON<br>11.35" X 5.25" X 8.00" |
|      |          |     |  | 7    | RP91694  | 1   | TANK 2.0 GALLON<br>15.61" X 5.25" X 8.00" |
|      |          |     |  | 8    | RAP90678 | 1   | HDWE TANK SCREWS                          |

\*\*R92957 O-RING KIT INCLUDES (8) O2-015-9N O-RINGS FOR 11/16" SPOT FACE ON MANIFOLD