

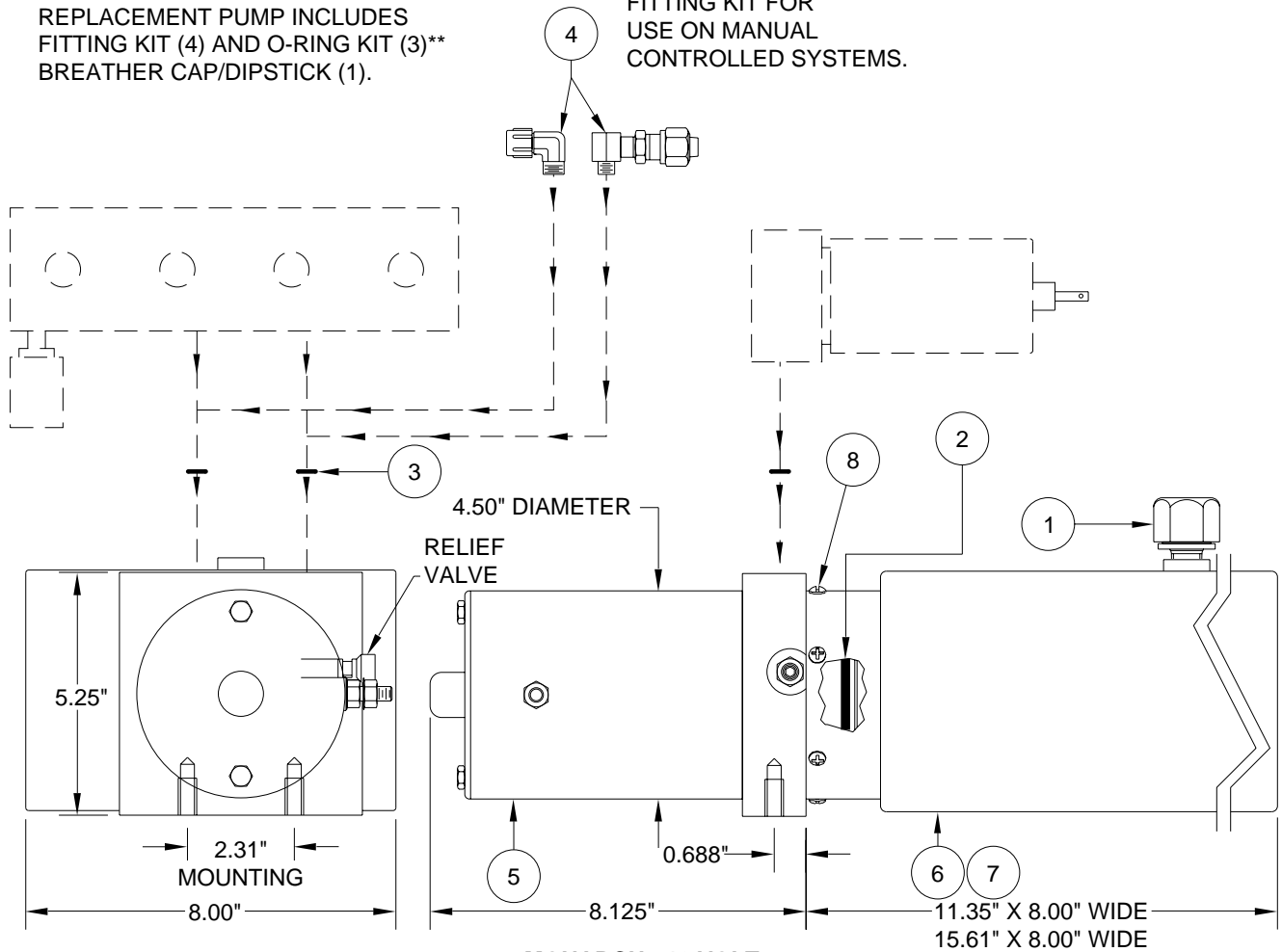
PUMP/MOTOR/TANK ASSEMBLY

AP30348/AP30349 MONARCH

PUMP RELIEF IS SET AT 3500 PSI.

REPLACEMENT PUMP INCLUDES FITTING KIT (4) AND O-RING KIT (3)** BREATHER CAP/DIPSTICK (1).

FITTING KIT FOR USE ON MANUAL CONTROLLED SYSTEMS.



**MONARCH - 12 VOLT
4.50" MOTOR
SUPPLIED 2003 TO 2005, 2015 TO PRESENT**

ITEM	PART	QTY	DESCRIPTION	ITEM	PART	QTY	DESCRIPTION
	RAP90916		POWER UNIT/BMM/1.5 GALLON 4.5" MOTOR (AP30348)	4	RAP0586	1	FITTING KIT
	RAP91169		POWER UNIT/BMM/2.0 GALLON 4.5" MOTOR (AP30349)	5	RAP90415	1	MOTOR KIT 4.50" 12 V
1	RAP7876	1	BREATHER CAP/ DIPSTICK	6	RP91692	1	TANK 1.5 GALLON 11.35" X 5.25" X 8.00"
2	RP5008	1	O-RING TANK	7	RP91694	1	TANK 2.0 GALLON 15.61" X 5.25" X 8.00"
3	**R92957	1	O-RING KIT	8	RAP90678	1	HDWE TANK SCREWS

NOTE : THIS POWER UNIT IS NO LONGER AVAILABLE. SOME PARTS FOR REBUILDING THESE PUMPS MAY BE AVAILABLE. SEE THE REPLACEMENT INFORMATION PAGE FOR REPLACEMENT PUMP.

**R92957 O-RING KIT INCLUDES (8) O2-015-9N O-RINGS FOR 11/16" SPOT FACE ON MANIFOLD