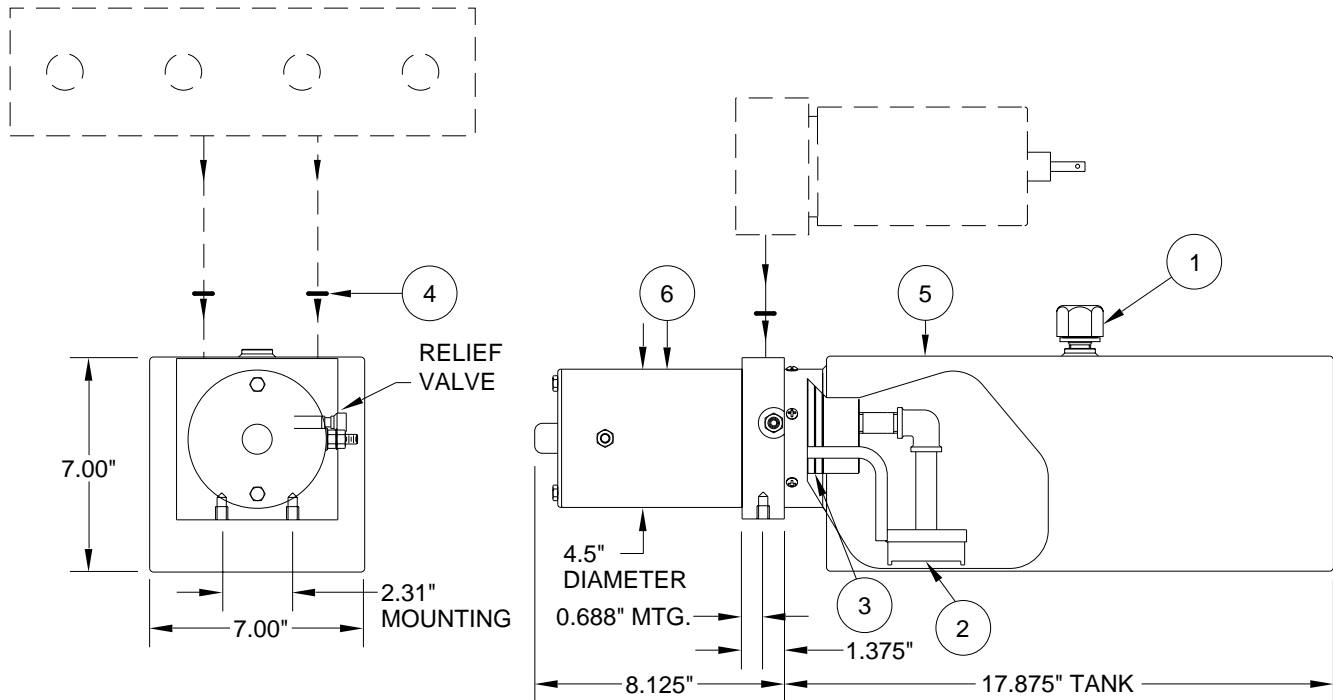


PUMP/MOTOR/TANK ASSEMBLY AP47729 MONARCH - 12 VOLT

PUMP RELIEF IS SET AT 3500 PSI.

REPLACEMENT PUMP INCLUDES
O-RING KIT (4)** AND
BREATHER CAP/DIPSTICK (1).



**MONARCH - 12 VOLT
3.5 GALLON BOTTOM MOUNT
SUPPLIED 2010 TO PRESENT**

ITEM	PART	QTY	DESCRIPTION	ITEM	PART	QTY	DESCRIPTION
	RAP93092		POWER UNIT/BMM/3.5 GALLON 4.5\" MOTOR	4	** R92957	1	O-RING KIT
1	RAP7876	1	BREATHER CAP/ DIPSTICK	5	RP90418	1	TANK 3.5 GAL. 17.875\" X 7.00\" X 7.00\" RECT.
2	RP90417	1	STRAINER	6	RAP90415	1	MOTOR KIT 4.5\" 12 VOLT
3	RP5008	1	O-RING TANK				

**R92957 O-RING KIT INCLUDES (8) O2-015-9N O-RINGS FOR 11/16\" SPOT FACE ON MANIFOLD