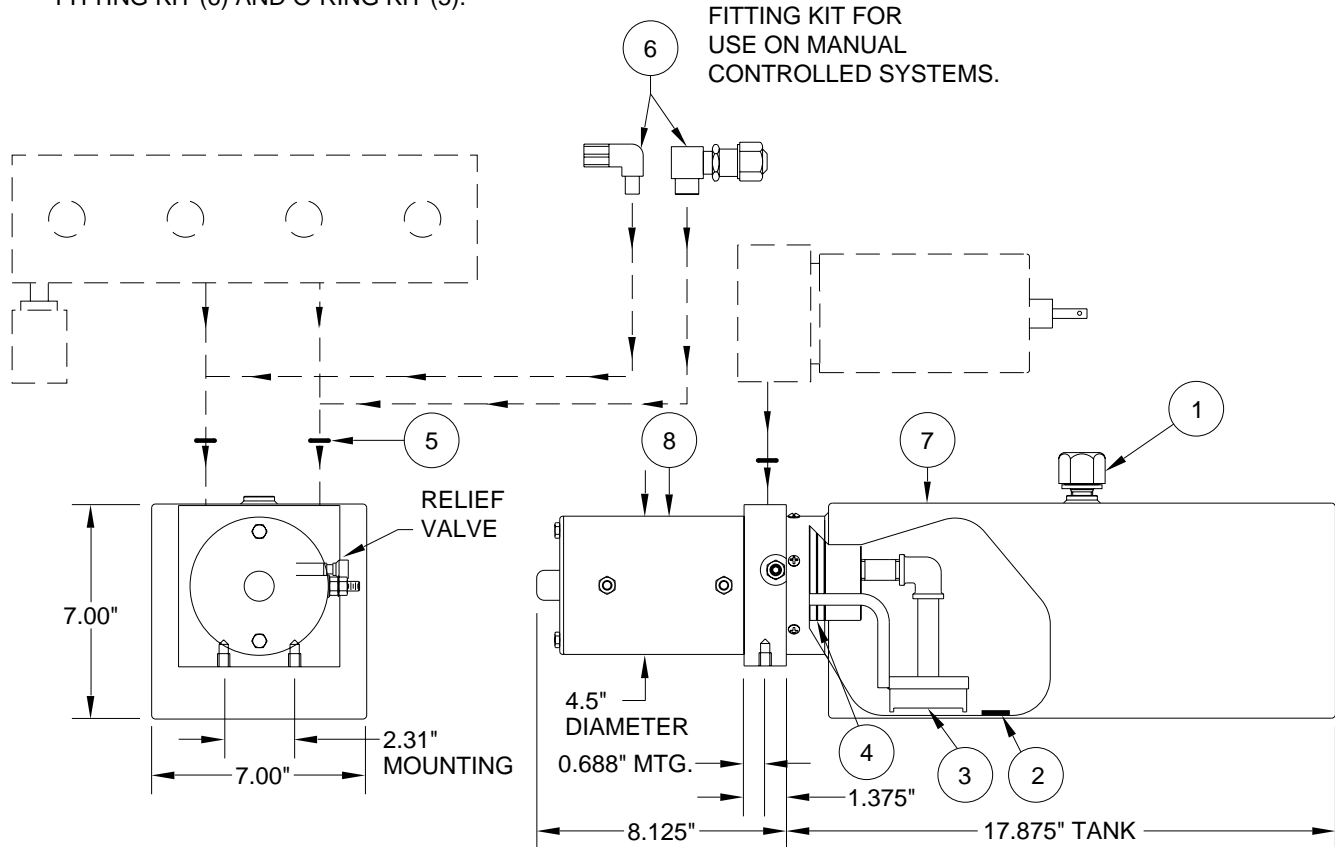


PUMP/MOTOR/TANK ASSEMBLY AP14013 MONARCH - 24 VOLT

PUMP RELIEF IS SET AT 3500 PSI.

REPLACEMENT PUMP INCLUDES
FITTING KIT (6) AND O-RING KIT (5).



MONARCH - 24 VOLT 3.5 GALLON BOTTOM MOUNT SUPPLIED 1997 TO PRESENT

ITEM	PART	QTY	DESCRIPTION	ITEM	PART	QTY	DESCRIPTION
	RAP90414		POWER UNIT/BMM/3.5 GALLON 4.5" MOTOR	5	** R92957	1	O-RING KIT
1	RAP7876	1	BREATHER CAP/ DIPSTICK	6	RAP0586	1	FITTING KIT
2	RP3526	1	MAGNET	7	RP90418	1	TANK 3.5 GAL. 17.875" X 7.00" X 7.00" RECT
3	RAP90417	1	STRAINER	8	RAP90416	1	MOTOR KIT 4.5" 24 VOLT
4	RP5008	1	O-RING TANK		R5303		BRACKET KIT ADAPTS BOTTOM MOUNT PUMP TO SIDE MOUNT.

**R92957 O-RING KIT INCLUDES (8) O2-015-9N
O-RINGS FOR 11/16" SPOT FACE ON MANIFOLD