

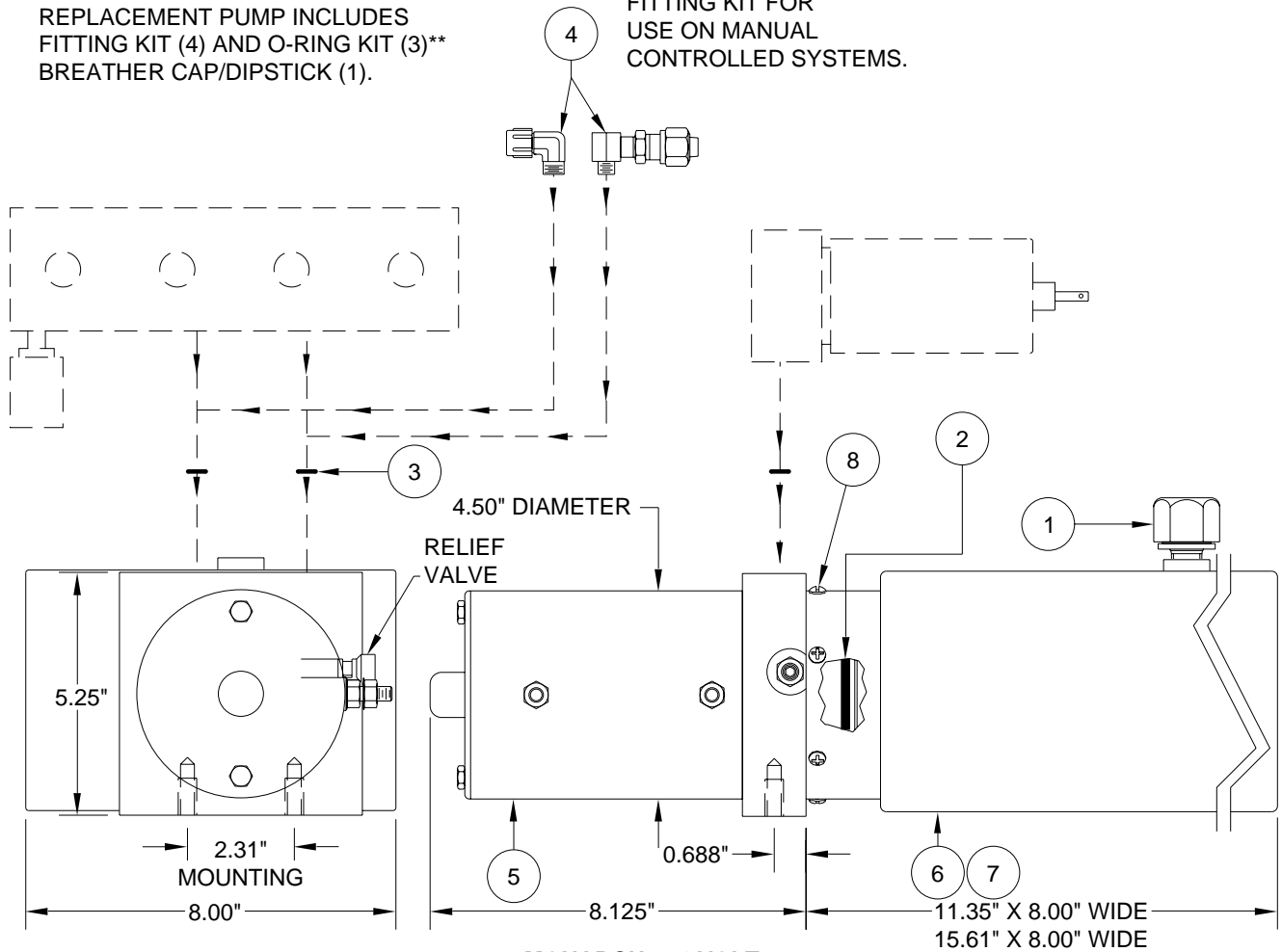
PUMP/MOTOR/TANK ASSEMBLY

AP30794/AP36181 MONARCH - 24V

PUMP RELIEF IS SET AT 3500 PSI.

REPLACEMENT PUMP INCLUDES FITTING KIT (4) AND O-RING KIT (3)** BREATHER CAP/DIPSTICK (1).

FITTING KIT FOR USE ON MANUAL CONTROLLED SYSTEMS.



**MONARCH - 24 VOLT
4.50" MOTOR
SUPPLIED 2003 TO PRESENT**

ITEM	PART	QTY	DESCRIPTION	ITEM	PART	QTY	DESCRIPTION
	RAP91170		POWER UNIT/BMM/1.5 GALLON 4.5" MOTOR (AP30794)	3	**R92957	1	O-RING KIT
	RAP91934		POWER UNIT/BMM/2.0 GALLON 4.5" MOTOR (AP36181)	4	RAP0586	1	FITTING KIT
1	RAP7876	1	BREATHER CAP/DIPSTICK	5	RAP90416	1	MOTOR 4.50" 24 V
2	RP5008	1	O-RING TANK	6	RP91692	1	TANK 1.5 GALLON 11.35" X 5.25" X 8.00"
				7	RP91694	1	TANK 2.0 GALLON 15.61" X 5.25" X 8.00"
				8	RAP90678	1	HDWE TANK SCREWS

**R92957 O-RING KIT INCLUDES (8) O2-015-9N O-RINGS FOR 11/16" SPOT FACE ON MANIFOLD