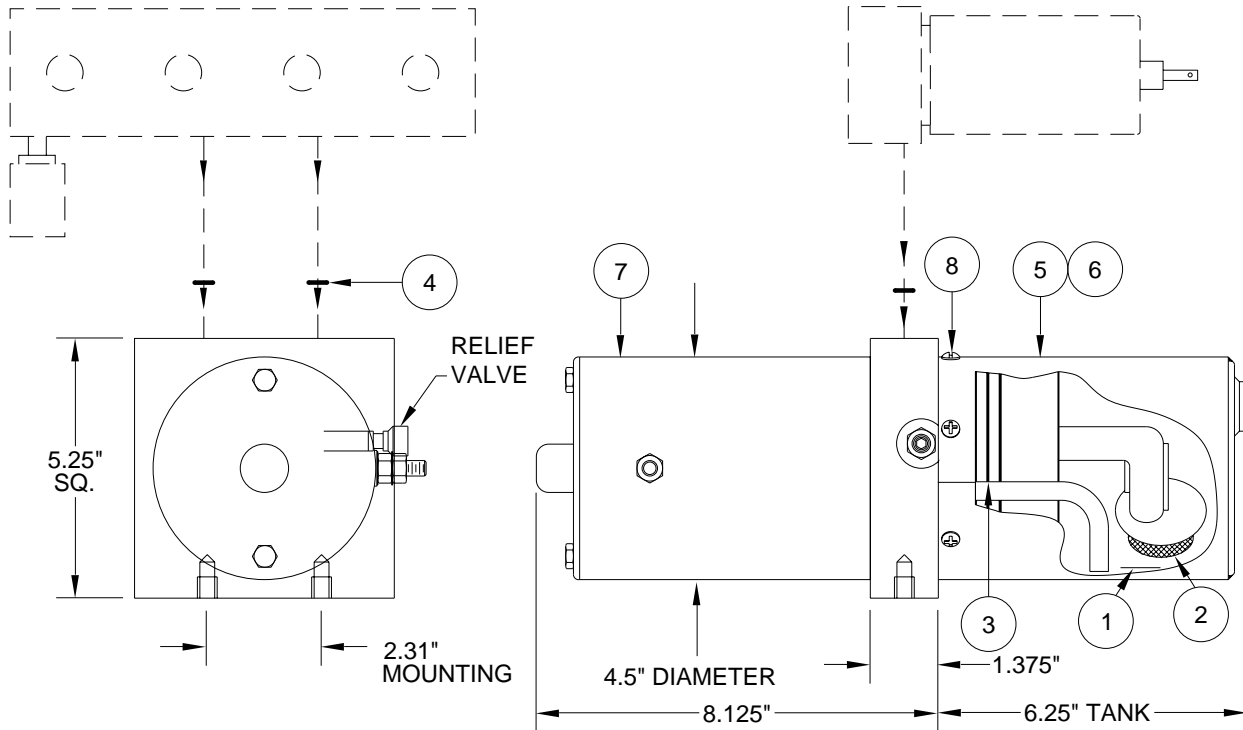


PUMP/MOTOR/TANK ASSEMBLY AP13332 MONARCH - 12 VOLT

PUMP RELIEF IS SET AT 3500 PSI.

FOR USE WITH AUXILIARY TANK.

REPLACEMENT PUMP INCLUDES
O-RING KIT (4).



MONARCH - 12 VOLT .25 GALLON BOTTOM MOUNT SUPPLIED 1997 TO PRESENT

ITEM	PART	QTY	DESCRIPTION	ITEM	PART	QTY	DESCRIPTION
	RAP90411		POWER UNIT/BMM/.35 GALLON 4.5" MOTOR	4	** R92957	1	O-RING KIT
1	RP3526	1	MAGNET	5	RP90421	1	TANK .35 GAL 8" x 4.5" RD
2	RP5010	1	STRAINER	6	RP92198	1	TANK .25 GAL 6" x 4.5" RD
3	RP5008	1	O-RING TANK	7	RAP90415	1	MOTOR KIT 4.5" 12 VOLT
				8	RAP90678	1	HDWE TANK SCREWS
					R5303		BRACKET KIT ADAPTS BOTTOM MOUNT PUMP TO SIDE MOUNT.

**R92957 O-RING KIT INCLUDES (8) O2-015-9N
O-RINGS FOR 11/16" SPOT FACE ON MANIFOLD