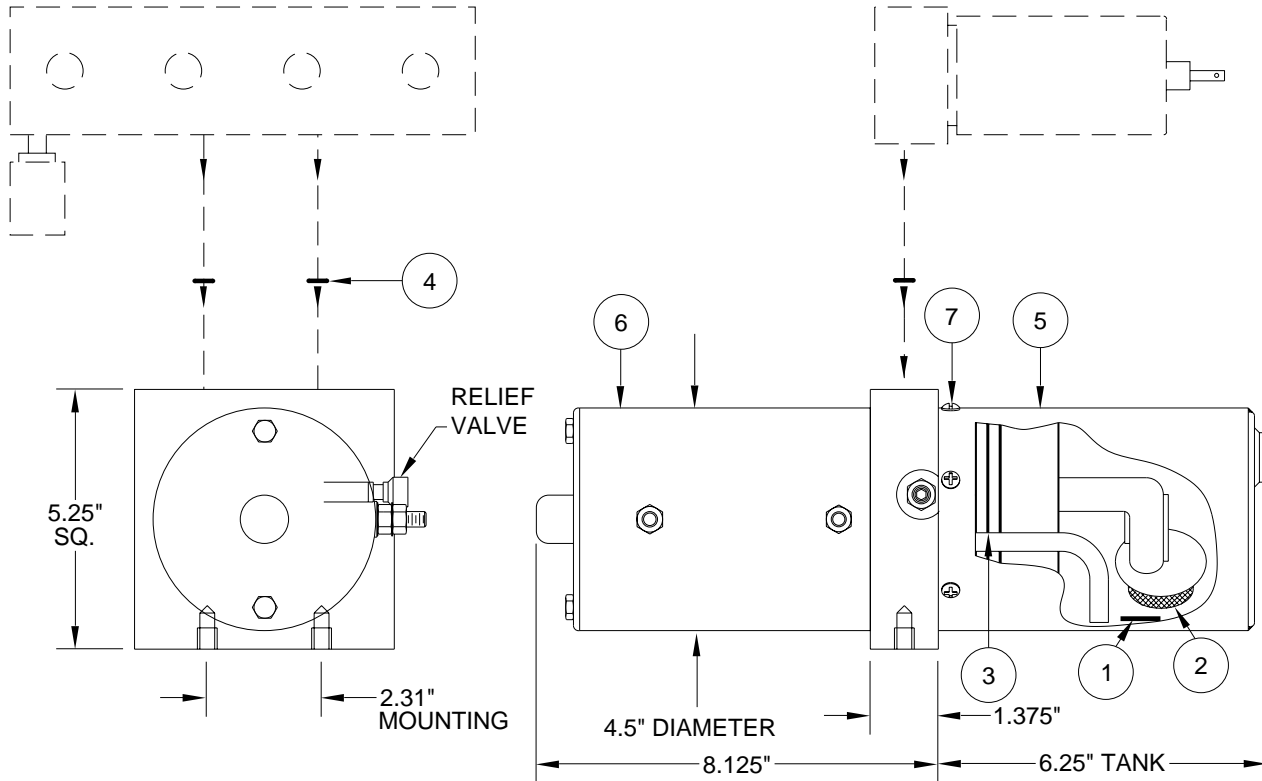


PUMP/MOTOR/TANK ASSEMBLY AP37344 MONARCH - 24 VOLT

PUMP RELIEF IS SET AT 3500 PSI.

FOR USE WITH AUXILIARY TANK.

REPLACEMENT PUMP INCLUDES
O-RING KIT (4).



**MONARCH - 24 VOLT
.25 GALLON BOTTOM MOUNT
SUPPLIED 2006 TO PRESENT**

ITEM	PART	QTY	DESCRIPTION	ITEM	PART	QTY	DESCRIPTION
	RAP91936		POWER UNIT/BMM/.25 GALLON 4.5" MOTOR (AP37344)	4	** R92957	1	O-RING KIT
1	RP3526	1	MAGNET	5	RP92198	1	TANK .25 GAL 6" x 4.5" RD
2	RP5010	1	STRAINER	6	RAP90416	1	MOTOR 4.50" 24 V
3	RP5008	1	O-RING TANK	7	RAP90678	1	HDWE TANK SCREWS

**R92957 O-RING KIT INCLUDES (8) O2-015-9N O-RINGS FOR 11/16" SPOT FACE ON MANIFOLD