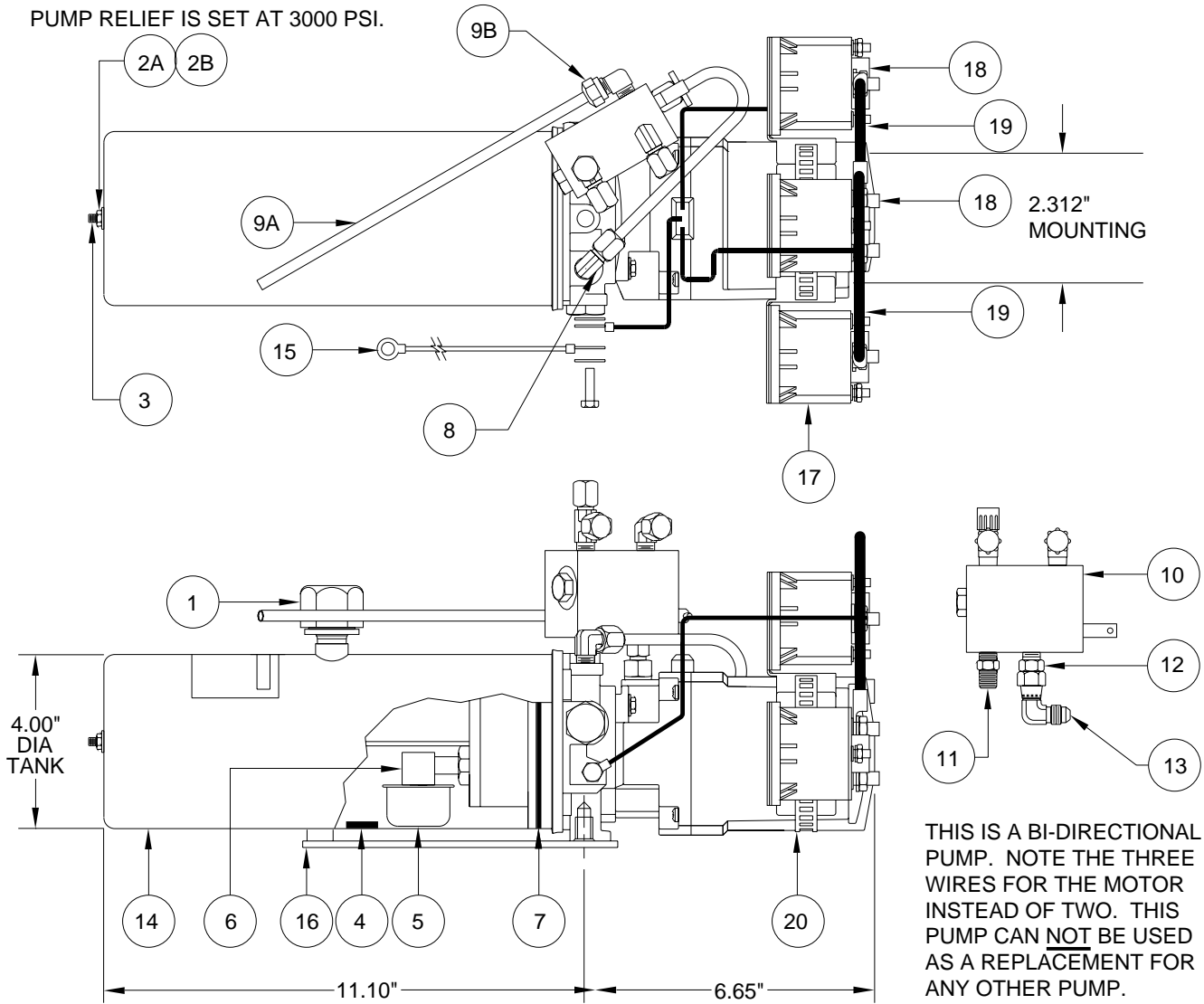


PUMP/MOTOR/TANK ASSEMBLY AP28608 PARKER/OILDYNE BI-DIRECTIONAL

PUMP RELIEF IS SET AT 3000 PSI.



ITEM	PART	QTY	DESCRIPTION	ITEM	PART	QTY	DESCRIPTION
	RAP92199		POWER UNIT/BMO REPLACES AP28608	9A		1	TUBE 1/4" X 9"
	RAP90090		PUMP/MOTOR/TANK ONLY	9B		1	ELBOW 1/4" X 1/8"
1	RAP7876	1	BREATHER CAP/ DIPSTICK	10	RAP90376	1	BACK PRESSURE VALVE (DOES NOT CONTAIN 11, 12 OR 13)
2	RAP7496	1	TANK MTG. KIT	11	RF9315	1	NIPPLE 1/8"
2A		1	HEX NUT	12	RF1456	1	CONNECTOR 1/8" X 1/4"
2B		1	WASHER/SEAL	13	RF90010	1	ELBOW SWIVEL 90 DEG.
3	RP7497	1	TANK MTG. ROD	14	RP7495	1	TANK 0.57 GALLON 10.5" X 4.0" ROUND
4	RP3526	1	MAGNET	15	RAP90275	1	GROUND WIRE (PUMP MOTOR GROUND)
5	RP7532	1	STRAINER	16	RP7533	1	TANK SUPPORT
6	RP7498	1	ELBOW	17	RAP38933	1	RELAY CONT. DUTY
7	RP7499	1	O-RING TANK	18	RAP35723	1	RELAY INT. DUTY
8	RF1453	1	ELBOW 1/8" X 1/4"	19	RAP7112	1	CABLE
9	RAP90373	1	TUBE KIT	20	RP92200	1	BAND CLAMP