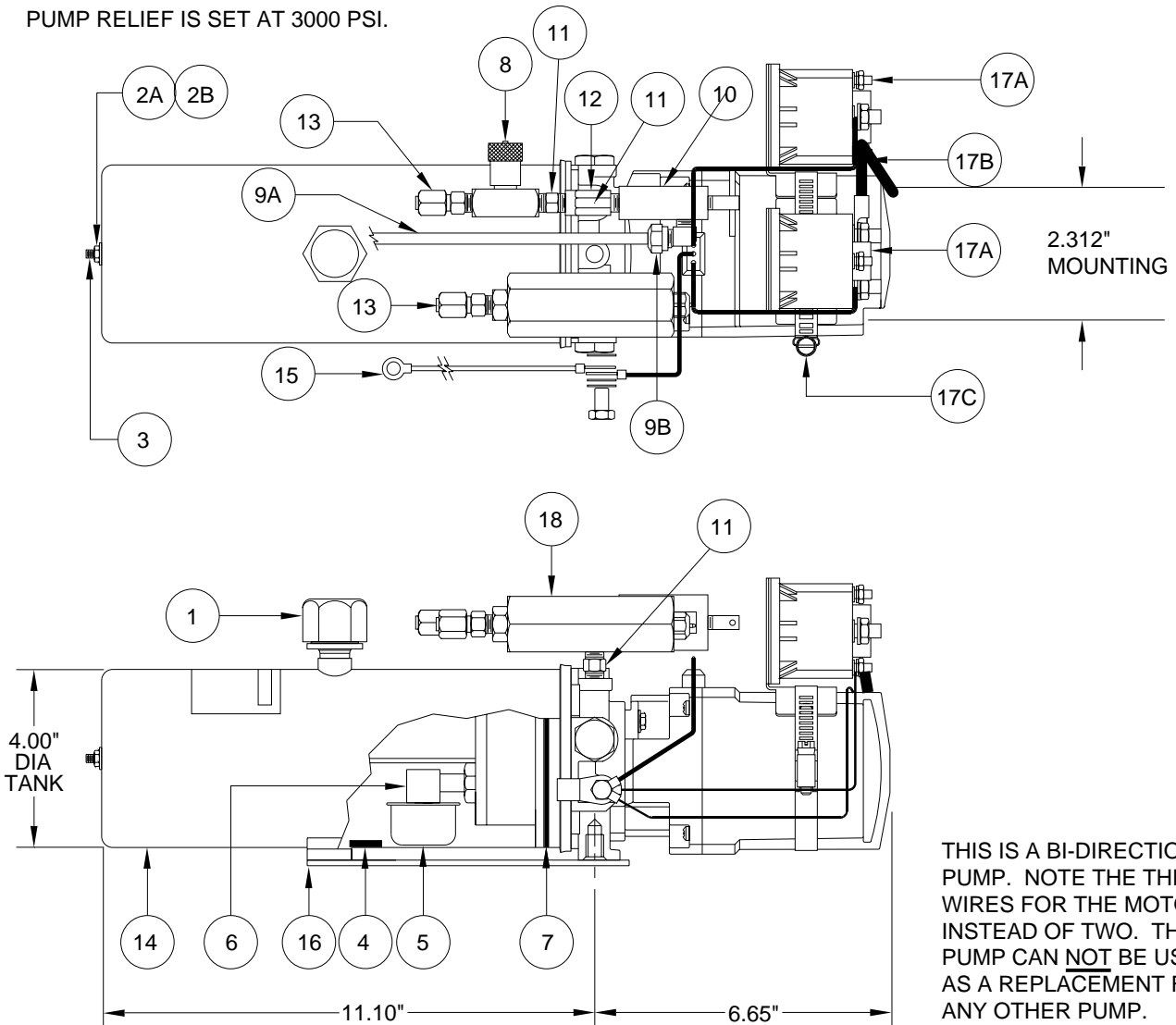


PUMP/MOTOR/TANK ASSEMBLY AP45497 PARKER/OILDYNE BI-DIRECTIONAL

PUMP RELIEF IS SET AT 3000 PSI.



ITEM	PART	QTY	DESCRIPTION	ITEM	PART	QTY	DESCRIPTION
	RAP93100		POWER UNIT/BMO REPLACES AP45497	10	RAP93102	1	DRAIN VALVE (DOES NOT CONTAIN ITEM 9B AND 12)
	RAP90090		PUMP/MOTOR/TANK ONLY	11	RF9315	3	NIPPLE 1/8"
1	RAP7876	1	BREATHER CAP/ DIPSTICK	12	RF90093	1	STREET TEE 1/8"
2	RAP7496	1	TANK MTG. KIT	13	RF1456	2	MALE CONNECTOR 1/8"
2A		1	HEX NUT	14	RP7495	1	TANK 0.57 GALLON 10.5" X 4.0" ROUND
2B		1	WASHER/SEAL	15	RAP90275	1	GROUND WIRE (PUMP MOTOR GROUND)
3	RP7497	1	TANK MTG. ROD	16	RP7533	1	TANK SUPPORT
4	RP3526	1	MAGNET	17	RAP15433	1	RELAY KIT
5	RP7532	1	STRAINER	17A	RAP35723	2	RELAY INT. DUTY
6	RP7498	1	ELBOW	17B		1	CABLE
7	RP7499	1	O-RING TANK	17C		1	BAND CLAMP
8	RAP90092	1	RETRACT VALVE KIT (INCLUDES ITEM 11)	18	RAP93103	1	RELIEF VALVE (INCLUDES ITEM 11)
9	RAP90373	1	TUBE KIT				
9A		1	TUBE 1/4" X 9"				
9B		1	ELBOW 1/4" X 1/8"				

**MR30.6427
28JAN15**