

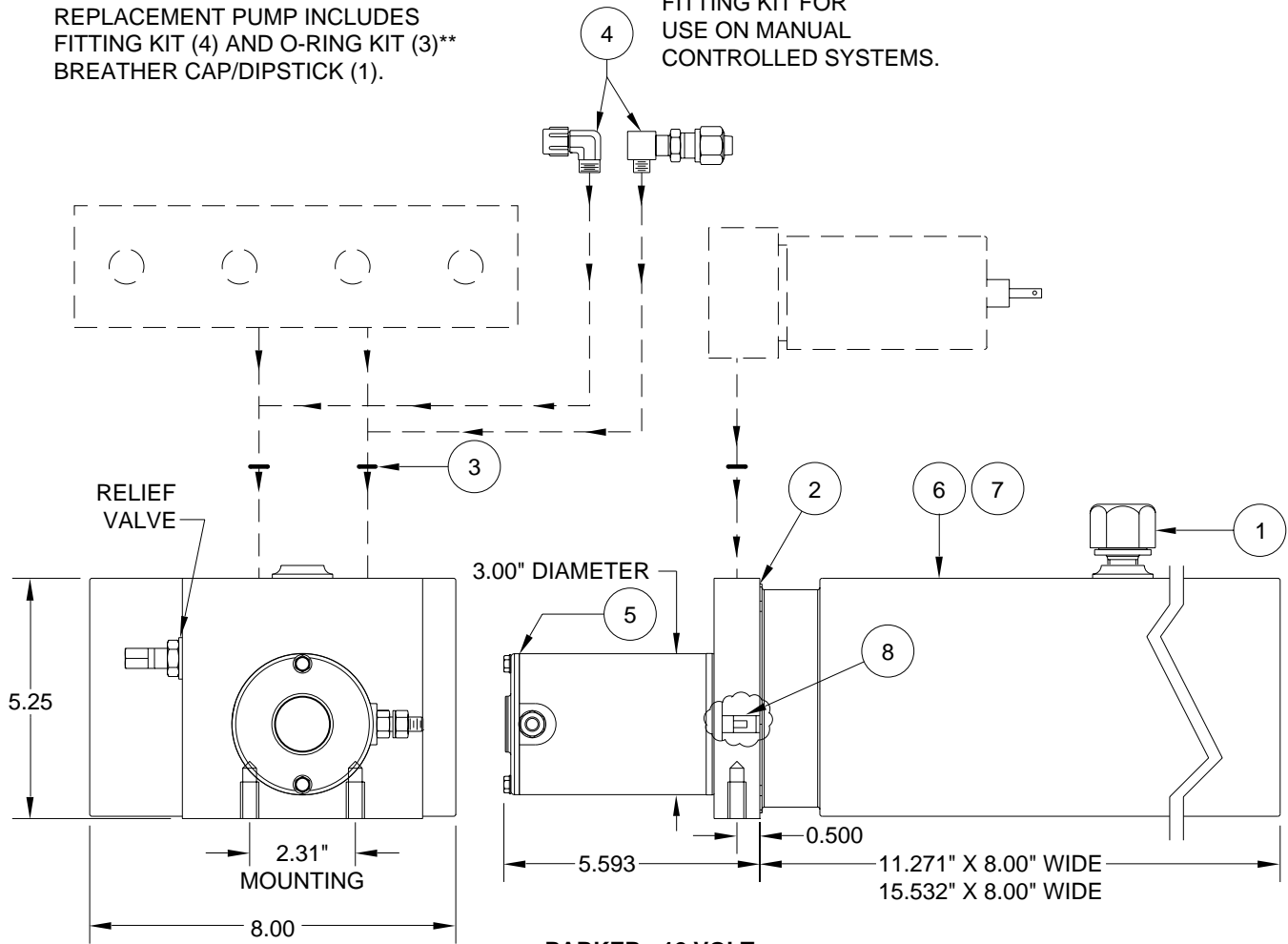
PUMP/MOTOR/TANK ASSEMBLY

AP29807/AP29808 PARKER

PUMP RELIEF IS SET AT 3500 PSI.

REPLACEMENT PUMP INCLUDES FITTING KIT (4) AND O-RING KIT (3)** BREATHER CAP/DIPSTICK (1).

FITTING KIT FOR USE ON MANUAL CONTROLLED SYSTEMS.



**PARKER - 12 VOLT
3.00" MOTOR
SUPPLIED 2003 TO 2010**

ITEM	PART	QTY	DESCRIPTION	ITEM	PART	QTY	DESCRIPTION
	AP29807	OBS	POWER UNIT/BMP/1.5 GALLON 3.00" MOTOR	3	**R92957	1	O-RING KIT
	AP29808	OBS	POWER UNIT/BMP/2.0 GALLON 3.00" MOTOR	4	RAP0586	1	FITTING KIT
1	RAP7876	1	BREATHER CAP/ DIPSTICK	5	RAP91244		MOTOR KIT 3.00"
2	RP91691	1	O-RING TANK	6	RP91689	1	TANK 1.5 GALLON 11.27" X 5.25" X 8.00"
				7	RP91690	1	TANK 2.0 GALLON 15.53" X 5.25" X 8.00"
				8	RP93632	1	COUPLING

NOTE : THIS POWER UNIT IS NO LONGER AVAILABLE. SOME PARTS FOR REBUILDING THESE PUMPS MAY BE AVAILABLE. SEE THE REPLACEMENT INFORMATION PAGE FOR REPLACEMENT PUMP.

**R92957 O-RING KIT INCLUDES (8) O2-015-9N O-RINGS FOR 11/16" SPOT FACE ON MANIFOLD