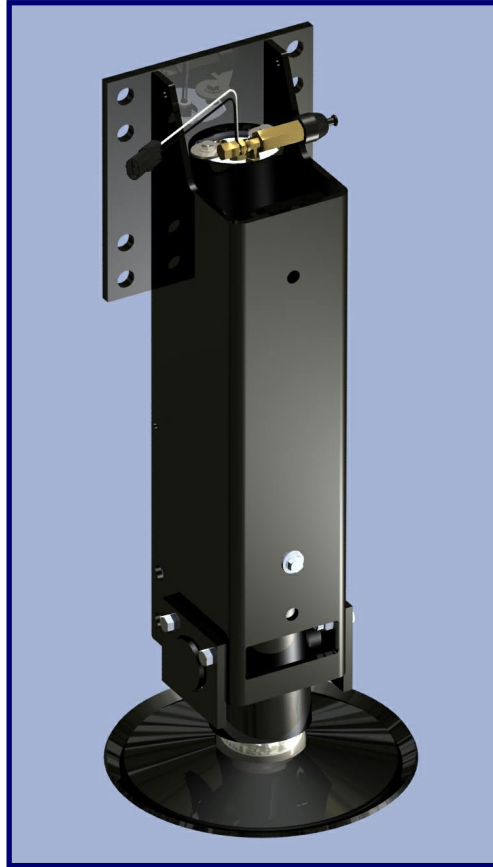


HWH® Straight-Acting/Pivoting, Power-Extend/Power-Retract Jack **16,000 lb. Lift Capacity each Jack with a 16" Stroke**



Includes the following features...

- Strong, hydraulic power-extend/power-retract jacks with a 16" stroke and a jack lifting capacity of 16,000 pounds per jack.
- Outward jack pivoting action allows coach sides to be lifted with minimal sliding of the jack foot and braces the trailer for maximum stability.
- Large pivoting ball & socket jack foot connection reduces bending stresses to rods and maximizes foot-to-ground contact and stability.
- State-of-the-art corrosion protected hydraulic cylinders designed for long life.

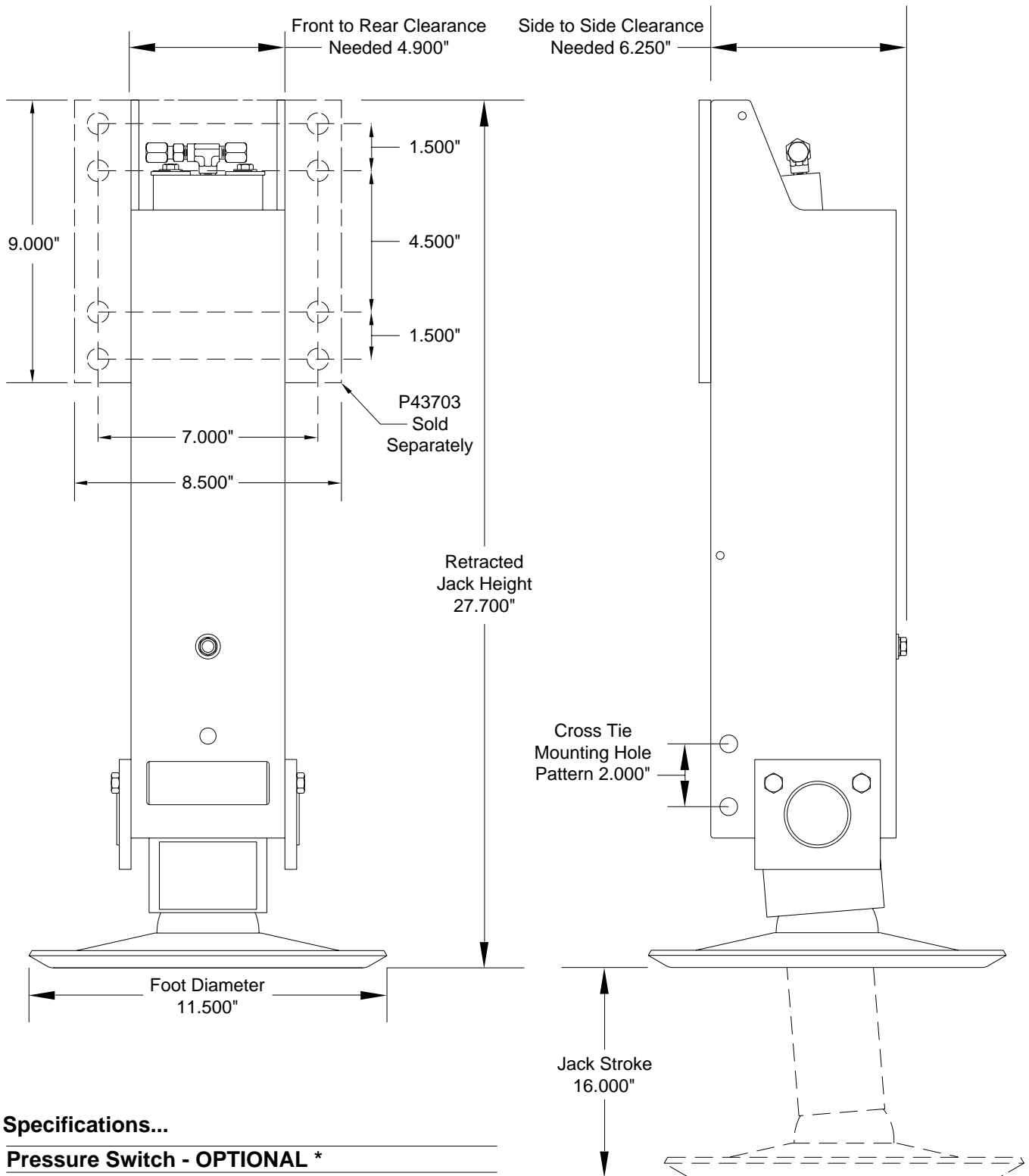


(On I-80, Exit 267 South) | 2096 Moscow Road | Moscow, Iowa 52760
Phone: (800)321-3494 or (563)724-3396 | Fax: (563)724-3408 | Web: www.HWH.com
Made in the USA

STRONG, RELIABLE, HYDRAULIC POWER

Specifications & Features

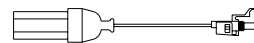
HWH®: Straight-Acting/Pivoting, Power-Extend/Power-Retract Jack AP44831 - 16,000 lb. Lift Capacity each Jack with a 16" Stroke



Specifications...

Pressure Switch - OPTIONAL *	
Cross Tie - NEEDED *	
Bolt To Frame Brackets - OPTIONAL *	
WEIGHTS (lbs.)	
Each Jack Assembly	XX
LOAD PER JACK (lbs.)	16,000

* Available from HWH Corporation



Pressure switch sold separately, needed for auto level systems only.